

Anti-ITPK1 Antibody (R2E63)

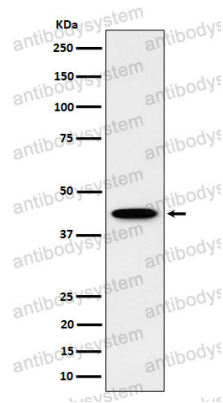
Summary

Catalog No.	RHG59302
Clone ID	R2E63
Host species	Rabbit
Tested applications	IHC: 1:100-1:200, WB: 1:1000-1:2000
Species reactivity	Human
Form	Liquid
Storage buffer	0.01M PBS, pH 7.4, 0.05% BSA, 50% Glycerol, 0.05% Sodium azide.
Concentration	1 mg/ml
Purity	>95% by SDS-PAGE.
Clonality	Monoclonal
Isotype	IgG
Applications	IHC, WB
Target	Inositol 1,3,4-trisphosphate 5/6-kinase, Ins(1,3,4)P(3) 5/6-kinase, ITPK1, Inositol-triphosphate 5/6-kinase, Inositol-tetrakisphosphate 1-kinase
Purification	Protein A/G purified from cell culture supernatant.
Endotoxin level	Please contact with the lab for this information.
Accession	Q13572
Stability and Storage	Use a manual defrost freezer and avoid repeated freeze thaw cycles. Store at 4 °C for frequent use. Store at -20 °C for twelve months from the date of receipt.

Note

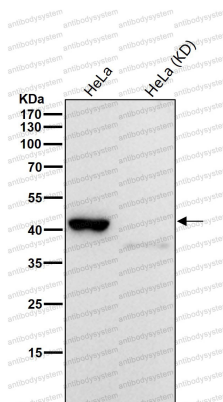
For research use only.

Data Image



Western blot

Western blot analysis of ITPK1 expression in HepG2 cell lysate.



Western blot

All lanes use the Antibody at 1:1k dilution for 1 hour at room temperature.