

Anti-CAMK2D Antibody (R2E59)

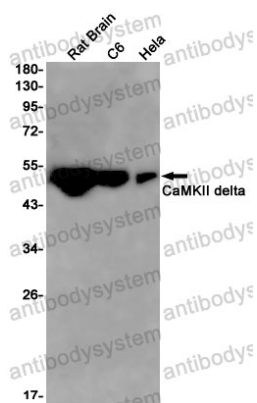
Summary

Catalog No.	RHG58501
Clone ID	R2E59
Host species	Rabbit
Tested applications	WB: 1:500-1:1000
Species reactivity	Human, Rat
Form	Liquid
Storage buffer	0.01M PBS, pH 7.4, 0.05% BSA, 50% Glycerol, 0.05% Sodium azide.
Concentration	1 mg/ml
Purity	>95% by SDS-PAGE.
Clonality	Monoclonal
Isotype	IgG
Applications	WB
Target	CAMKD, CaM kinase II subunit delta, CaMK-II subunit delta, CAMK2D, Calcium/calmodulin-dependent protein kinase type II subunit delta
Purification	Protein A/G purified from cell culture supernatant.
Endotoxin level	Please contact with the lab for this information.
Accession	Q13557
Stability and Storage	Use a manual defrost freezer and avoid repeated freeze thaw cycles. Store at 4 °C for frequent use. Store at -20 °C for twelve months from the date of receipt.

Note

For research use only.

Data Image



Western blot

Western blot analysis of CaMKII delta in rat Brain, C6, Hela lysates using CaMKII delta antibody.