

Anti-Phospho-EIF4EBP1 (Thr46) Antibody (R2E53)

Summary

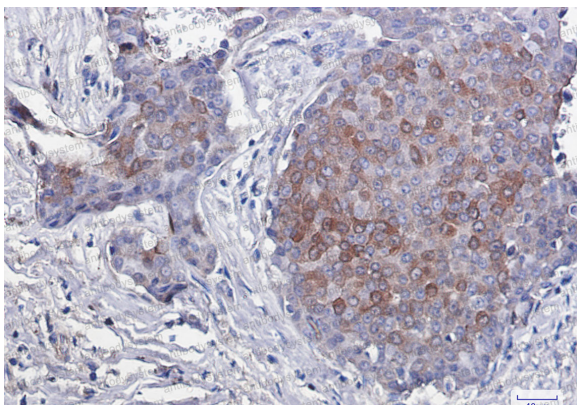
Catalog No.	RHG57902
Clone ID	R2E53
Host species	Rabbit
Tested applications	IHC: 1:50-1:100, IP: 1:20, WB: 1:500-1:1000
Species reactivity	Human, Mouse, Rat
Form	Liquid
Storage buffer	0.01M PBS, pH 7.4, 0.05% BSA, 50% Glycerol, 0.05% Sodium azide.
Concentration	1 mg/ml
Purity	>95% by SDS-PAGE.
Clonality	Monoclonal
Isotype	IgG
Applications	IHC, IP, WB
Target	PHAS-I, eIF4E-binding protein 1, EIF4EBP1, Eukaryotic translation initiation factor 4E-binding protein 1, 4E-BP1, Phosphorylated heat- and acid-stable protein regulated by insulin 1
Purification	Protein A/G purified from cell culture supernatant.
Endotoxin level	Please contact with the lab for this information.
Accession	Q13541

Stability and Storage

Use a manual defrost freezer and avoid repeated freeze thaw cycles. Store at 4 °C for frequent use. Store at -20 °C for twelve months from the date of receipt.

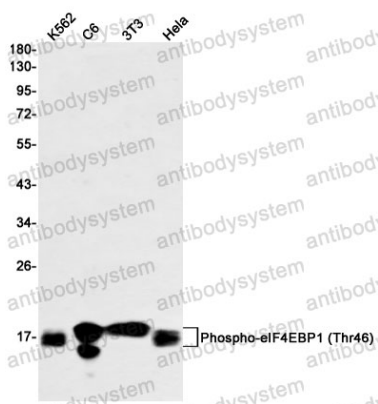
Note

For research use only.

Data Image

Immunohistochemical

Immunohistochemistry analysis of paraffin-embedded Human breast cancer using eIF4EBP1/eIF4EBP2/eIF4EBP3 (Phospho- T45) antibody. High-pressure and temperature Sodium Citrate pH 6.0 was used for antigen retrieval.



Western blot

Western blot analysis of Phospho-eIF4EBP1 (Thr46) in K562, C6, 3T3, HeLa lysates using Phospho-4E BP1 (Thr46) antibody.