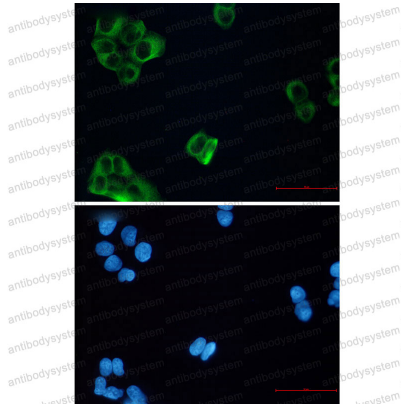


Anti-TUBB3/Beta Tubulin Antibody (R2E48)

Summary

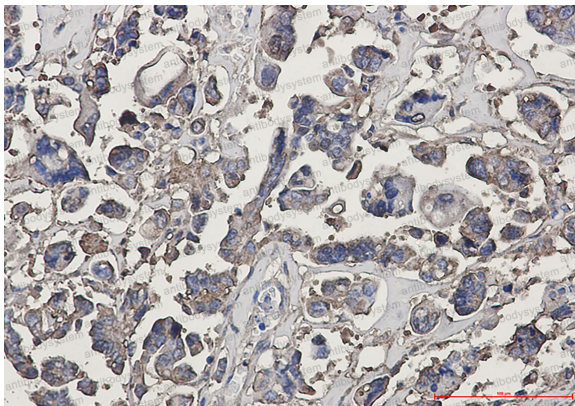
Catalog No.	RHG56703
Clone ID	R2E48
Host species	Rabbit
Tested applications	IF: 1:50-1:200, IHC: 1:50-1:100, IP: 1:20, WB: 1:500-1:1000
Species reactivity	Human, Mouse, Rat
Form	Liquid
Storage buffer	0.01M PBS, pH 7.4, 0.05% BSA, 50% Glycerol, 0.05% Sodium azide.
Concentration	1 mg/ml
Purity	>95% by SDS-PAGE.
Clonality	Monoclonal
Isotype	IgG
Applications	IF, IHC, IP, WB
Target	Tubulin beta-III, TUBB4, TUBB3, Tubulin beta-4 chain, Tubulin beta-3 chain
Purification	Protein A/G purified from cell culture supernatant.
Endotoxin level	Please contact with the lab for this information.
Accession	Q13509
Stability and Storage	Use a manual defrost freezer and avoid repeated freeze thaw cycles. Store at 4 °C for frequent use. Store at -20 °C for twelve months from the date of receipt.
Note	For research use only.

Data Image



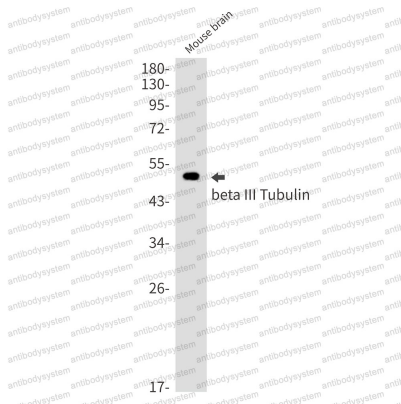
Immunofluorescence

Immunocytochemistry analysis of beta III Tubulin (green) in Hela using beta III Tubulin antibody, and DAPI(blue).



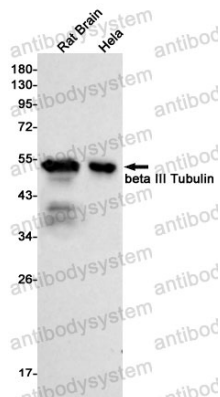
Immunohistochemical

Immunohistochemistry analysis of paraffin-embedded Human Cholangiocarcinoma using beta III Tubulin antibody. High-pressure and temperature Sodium Citrate pH 6.0 was used for antigen retrieval.



Western blot

Western blot analysis of beta III Tubulin in mouse brain lysates using beta III Tubulin antibody.



Western blot

Western blot analysis of beta III Tubulin in rat Brain, Hela lysates using beta III Tubulin antibody.