

Anti-NFATC2 Antibody (R2E40)

Summary

Catalog No.	RHG54501
Clone ID	R2E40
Host species	Rabbit
Tested applications	WB: 1:1000-1:2000
Species reactivity	Human
Form	Liquid
Storage buffer	0.01M PBS, pH 7.4, 0.05% BSA, 50% Glycerol, 0.05% Sodium azide.
Concentration	1 mg/ml
Purity	>95% by SDS-PAGE.
Clonality	Monoclonal
Isotype	IgG
Applications	WB
Target	NFAT pre-existing subunit, NFATc2, Nuclear factor of activated T-cells, cytoplasmic 2, NF-ATc2, T-cell transcription factor NFAT1, NFATC2, NF-ATp, NFAT1, NFATP
Purification	Protein A/G purified from cell culture supernatant.
Endotoxin level	Please contact with the lab for this information.
Accession	Q13469

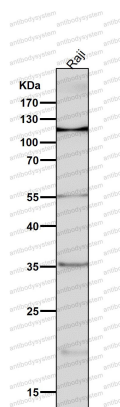
Stability and Storage

Use a manual defrost freezer and avoid repeated freeze thaw cycles. Store at 4 °C for frequent use. Store at -20 °C for twelve months from the date of receipt.

Note

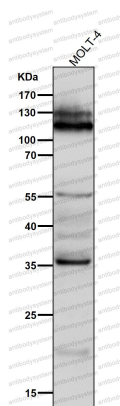
For research use only.

Data Image



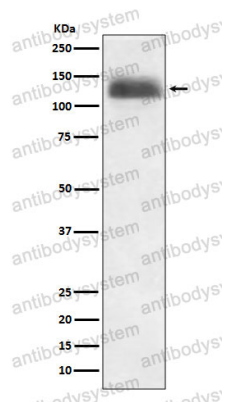
Western blot

All lanes use the Antibody at 1:2K dilution for 1 hour at room temperature.



Western blot

All lanes use the Antibody at 1:2K dilution for 1 hour at room temperature.



Western blot

Western blot analysis of NFAT1 expression in Ramos cell lysate.