

# Anti-SKP2 Antibody (R2E22)

## Summary

---

<b>Catalog No.</b>	RHG47901
<b>Clone ID</b>	R2E22
<b>Host species</b>	Rabbit
<b>Tested applications</b>	IF: 1:50-1:200, WB: 1:500-1:1000
<b>Species reactivity</b>	Human
<b>Form</b>	Liquid
<b>Storage buffer</b>	0.01M PBS, pH 7.4, 0.05% BSA, 50% Glycerol, 0.05% Sodium azide.
<b>Concentration</b>	1 mg/ml
<b>Purity</b>	>95% by SDS-PAGE.
<b>Clonality</b>	Monoclonal
<b>Isotype</b>	IgG
<b>Applications</b>	IF, WB
<b>Target</b>	Cyclin-A/CDK2-associated protein p45, F-box/LRR-repeat protein 1, S-phase kinase-associated protein 2, SKP2, p45skp2, FBXL1, F-box protein Skp2
<b>Purification</b>	Protein A/G purified from cell culture supernatant.
<b>Endotoxin level</b>	Please contact with the lab for this information.
<b>Accession</b>	Q13309

**Stability and Storage**

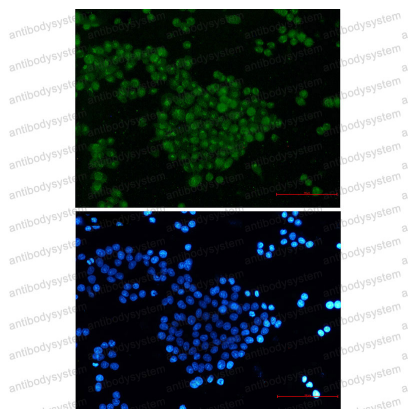
Use a manual defrost freezer and avoid repeated freeze thaw cycles. Store at 4 °C for frequent use. Store at -20 °C for twelve months from the date of receipt.

**Note**

For research use only.

**Data Image**

---



Immunofluorescence

Immunocytochemistry analysis of SKP2 (green) in hela using SKP2 Rabbit mAb, and DAPI(blue).