

# Anti-SRSF6 Antibody (R2E10)

## Summary

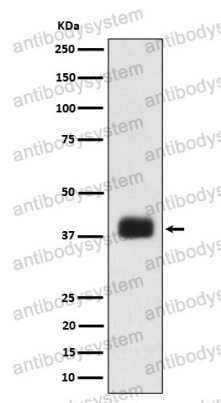
---

<b>Catalog No.</b>	RHG45901
<b>Clone ID</b>	R2E10
<b>Host species</b>	Rabbit
<b>Tested applications</b>	IHC: 1:100-1:200, WB: 1:1000-1:2000
<b>Species reactivity</b>	Human
<b>Form</b>	Liquid
<b>Storage buffer</b>	0.01M PBS, pH 7.4, 0.05% BSA, 50% Glycerol, 0.05% Sodium azide.
<b>Concentration</b>	1 mg/ml
<b>Purity</b>	>95% by SDS-PAGE.
<b>Clonality</b>	Monoclonal
<b>Isotype</b>	IgG
<b>Applications</b>	IHC, WB
<b>Target</b>	Splicing factor, arginine/serine-rich 6, Pre-mRNA-splicing factor SRP55, SRP55, Serine/arginine-rich splicing factor 6, SFRS6, SRSF6
<b>Purification</b>	Protein A/G purified from cell culture supernatant.
<b>Endotoxin level</b>	Please contact with the lab for this information.
<b>Accession</b>	Q13247
<b>Stability and Storage</b>	Use a manual defrost freezer and avoid repeated freeze thaw cycles. Store at 4 °C for frequent use. Store at -20 °C for twelve months from the date of receipt.

**Note** For research use only.

## Data Image

---



Western blot

Western blot analysis of SR protein repeat expression in K562 cell lysate.