

Anti-CBX3 Antibody (R2E04)

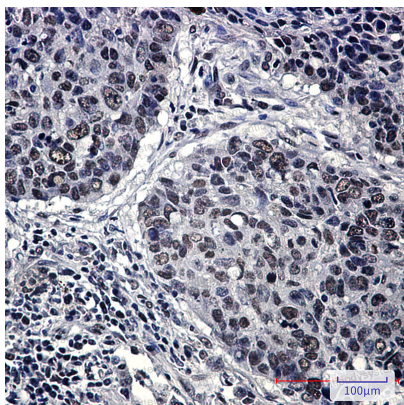
Summary

Catalog No.	RHG43404
Clone ID	R2E04
Host species	Rabbit
Tested applications	IHC: 1:50-1:100, IP: 1:20, WB: 1:500-1:1000
Species reactivity	Human
Form	Liquid
Storage buffer	0.01M PBS, pH 7.4, 0.05% BSA, 50% Glycerol, 0.05% Sodium azide.
Concentration	1 mg/ml
Purity	>95% by SDS-PAGE.
Clonality	Monoclonal
Isotype	IgG
Applications	IHC, IP, WB
Target	HECH, Heterochromatin protein 1 homolog gamma, Modifier 2 protein, Chromobox protein homolog 3, HP1 gamma, CBX3
Purification	Protein A/G purified from cell culture supernatant.
Endotoxin level	Please contact with the lab for this information.
Accession	Q13185
Stability and Storage	Use a manual defrost freezer and avoid repeated freeze thaw cycles. Store at 4 °C for frequent use. Store at -20 °C for twelve months from the date of receipt.

Note

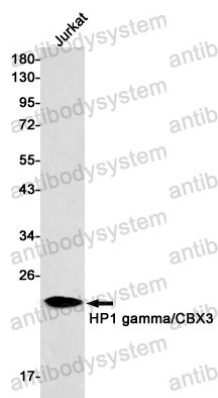
For research use only.

Data Image



Immunohistochemical

Immunohistochemistry analysis of paraffin-embedded Human lung cancer using HP1 gamma antibody. High-pressure and temperature Sodium Citrate pH 6.0 was used for antigen retrieval.



Western blot

Western blot analysis of HP1 gamma/CBX3 in Jurkat lysates using HP1 gamma antibody.