

Anti-KLF10 Antibody (R2D81)

Summary

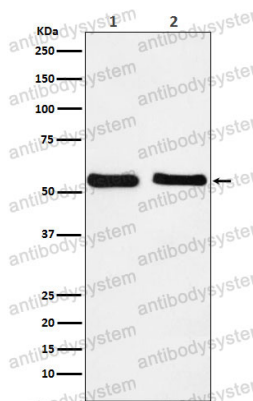
Catalog No.	RHG41101
Clone ID	R2D81
Host species	Rabbit
Tested applications	WB: 1:1000-1:2000
Species reactivity	Human, Mouse, Rat
Form	Liquid
Storage buffer	0.01M PBS, pH 7.4, 0.05% BSA, 50% Glycerol, 0.05% Sodium azide.
Concentration	1 mg/ml
Purity	>95% by SDS-PAGE.
Clonality	Monoclonal
Isotype	IgG
Applications	WB
Target	TGFB-inducible early growth response protein 1, TIEG1, KLF10, Transforming growth factor-beta-inducible early growth response protein 1, TIEG-1, TIEG, Krueppel-like factor 10, EGR-alpha
Purification	Protein A/G purified from cell culture supernatant.
Endotoxin level	Please contact with the lab for this information.
Accession	Q13118

Stability and Storage

Use a manual defrost freezer and avoid repeated freeze thaw cycles. Store at 4 °C for frequent use. Store at -20 °C for twelve months from the date of receipt.

Note

For research use only.

Data Image

Western blot

Western blot analysis of KLF10 expression in (1) HepG2 cell lysate; (2) NIH/3T3 cell lysate.