

Anti-IFT88 Antibody (R2D76)

Summary

Catalog No.	RHG40002
Clone ID	R2D76
Host species	Rabbit
Tested applications	WB: 1:1000-1:2000
Species reactivity	Human, Mouse, Rat
Form	Liquid
Storage buffer	0.01M PBS, pH 7.4, 0.05% BSA, 50% Glycerol, 0.05% Sodium azide.
Concentration	1 mg/ml
Purity	>95% by SDS-PAGE.
Clonality	Monoclonal
Isotype	IgG
Applications	WB
Target	IFT88, Tetratricopeptide repeat protein 10, TTC10, Intraflagellar transport protein 88 homolog, TPR repeat protein 10, TG737, Recessive polycystic kidney disease protein Tg737 homolog
Purification	Protein A/G purified from cell culture supernatant.
Endotoxin level	Please contact with the lab for this information.
Accession	Q13099

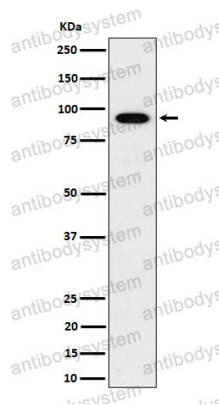
Stability and Storage

Use a manual defrost freezer and avoid repeated freeze thaw cycles. Store at 4 °C for frequent use. Store at -20 °C for twelve months from the date of receipt.

Note

For research use only.

Data Image



Western blot

Western blot analysis of IFT88 expression in HepG2 cell lysate.