

Anti-MRPL28 Antibody (R2D72)

Summary

Catalog No.	RHG39401
Clone ID	R2D72
Host species	Rabbit
Tested applications	FCM: 1:20-1:100, IF: 1:50-1:200, IP: 1:20-1:50, WB: 1:1000-1:2000
Species reactivity	Human, Mouse, Rat
Form	Liquid
Storage buffer	0.01M PBS, pH 7.4, 0.05% BSA, 50% Glycerol, 0.05% Sodium azide.
Concentration	1 mg/ml
Purity	>95% by SDS-PAGE.
Clonality	Monoclonal
Isotype	IgG
Applications	FCM, IF, IP, WB
Target	MRP-L28, Mitochondrial large ribosomal subunit protein bL28m, MRPL28, 39S ribosomal protein L28, mitochondrial, MAAT1, Melanoma antigen p15, L28mt, Melanoma-associated antigen recognized by T-lymphocytes
Purification	Protein A/G purified from cell culture supernatant.
Endotoxin level	Please contact with the lab for this information.
Accession	Q13084

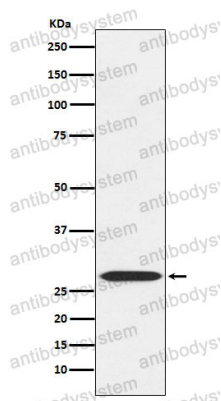
Stability and Storage

Use a manual defrost freezer and avoid repeated freeze thaw cycles. Store at 4 °C for frequent use. Store at -20 °C for twelve months from the date of receipt.

Note

For research use only.

Data Image



Western blot

Western blot analysis of MRPL28 expression in 293 cell lysate.