

Anti-Phospho-MST1/MST2 (T183 + T180) Antibody (R2D68)

Summary

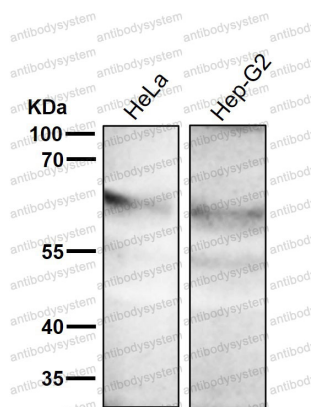
Catalog No.	RHG38102
Clone ID	R2D68
Host species	Rabbit
Tested applications	WB: 1:1000-1:2000
Species reactivity	Human
Form	Liquid
Storage buffer	0.01M PBS, pH 7.4, 0.05% BSA, 50% Glycerol, 0.05% Sodium azide.
Concentration	1 mg/ml
Purity	>95% by SDS-PAGE.
Clonality	Monoclonal
Isotype	IgG
Applications	WB
Target	KRS2, STK4, MST1/N, MST1/C, MST1, MST-1, Serine/threonine-protein kinase 4, Mammalian STE20-like protein kinase 1, STE20-like kinase MST1, Serine/threonine-protein kinase Krs-2
Purification	Protein A/G purified from cell culture supernatant.
Endotoxin level	Please contact with the lab for this information.
Accession	Q13043, Q13188

Stability and Storage

Use a manual defrost freezer and avoid repeated freeze thaw cycles. Store at 4 °C for frequent use. Store at -20 °C for twelve months from the date of receipt.

Note

For research use only.

Data Image

Western blot

Western blot analysis of Phospho-MST1/MST2 (T183 + T180) expression in (1) HeLa cell lysate treated with Calyculin A; (2) HepG2 cell lysate treated with Calyculin A.