

Anti-ILF3 Antibody (R2D53)

Summary

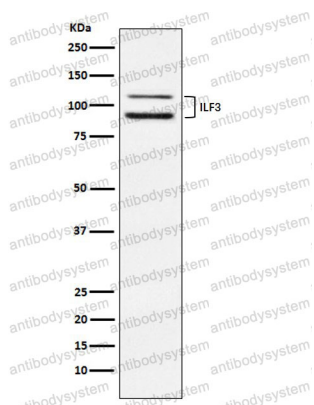
| | |
|----------------------------|--|
| Catalog No. | RHG33302 |
| Clone ID | R2D53 |
| Host species | Rabbit |
| Tested applications | FCM: 1:20-1:100, IF: 1:50-1:200, IHC: 1:100-1:200, IP: 1:20-1:50, WB: 1:1000-1:2000 |
| Species reactivity | Human, Mouse |
| Form | Liquid |
| Storage buffer | 0.01M PBS, pH 7.4, 0.05% BSA, 50% Glycerol, 0.05% Sodium azide. |
| Concentration | 1 mg/ml |
| Purity | >95% by SDS-PAGE. |
| Clonality | Monoclonal |
| Isotype | IgG |
| Applications | FCM, IF, IHC, IP, WB |
| Target | ILF3, MPHOSPH4, DRBP76, TCP80, DRBF, Translational control protein 80, M-phase phosphoprotein 4, Nuclear factor associated with dsRNA, NF90, NFAR, MPP4, NF-AT-90, Double-stranded RNA-binding protein 76, Interleukin enhancer-binding factor 3, Nuclear factor of activated T-cells 90 kDa |
| Purification | Protein A/G purified from cell culture supernatant. |
| Endotoxin level | Please contact with the lab for this information. |
| Accession | Q12906 |

Stability and Storage

Use a manual defrost freezer and avoid repeated freeze thaw cycles. Store at 4 °C for frequent use. Store at -20 °C for twelve months from the date of receipt.

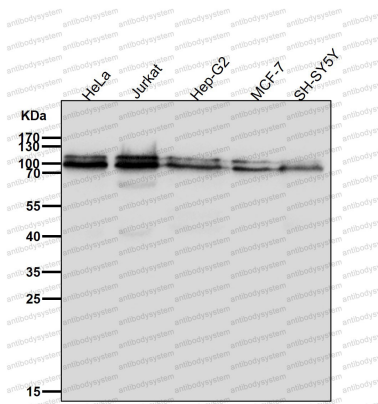
Note

For research use only.

Data Image

Western blot

Western blot analysis of ILF3 expression in HeLa cell lysate.



Western blot

All lanes use the Antibody at 1:2K dilution for 1 hour at room temperature.