

Anti-AIMP1/EMAP-II Antibody (R2D51)

Summary

Catalog No.	RHG33102
Clone ID	R2D51
Host species	Rabbit
Tested applications	WB: 1:500-1:1000
Species reactivity	Human, Rat
Form	Liquid
Storage buffer	0.01M PBS, pH 7.4, 0.05% BSA, 50% Glycerol, 0.05% Sodium azide.
Concentration	1 mg/ml
Purity	>95% by SDS-PAGE.
Clonality	Monoclonal
Isotype	IgG
Applications	WB
Target	AIMP1, Endothelial monocyte-activating polypeptide II, EMAP-II, Aminoacyl tRNA synthase complex-interacting multifunctional protein 1, EMAP-2, SCYE1, EMAP2, Multisynthase complex auxiliary component p43, Small inducible cytokine subfamily E member 1
Purification	Protein A/G purified from cell culture supernatant.
Endotoxin level	Please contact with the lab for this information.
Accession	Q12904

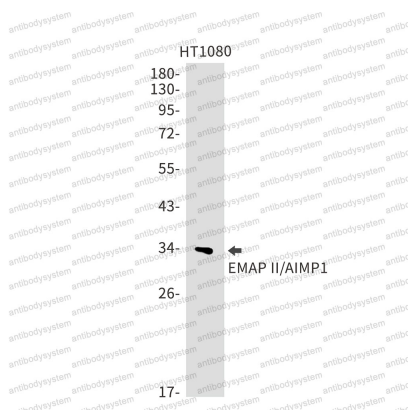
Stability and Storage

Use a manual defrost freezer and avoid repeated freeze thaw cycles. Store at 4 °C for frequent use. Store at -20 °C for twelve months from the date of receipt.

Note

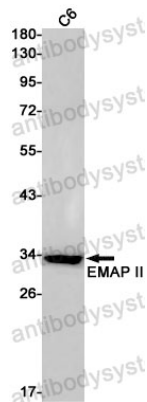
For research use only.

Data Image



Western blot

Western blot analysis of EMAP II/AIMP1 in HT-1080 lysates using EMAP II antibody.



Western blot

Western blot analysis of EMAP II in C6 lysates using EMAP II antibody.