

# Anti-SF3A3 Antibody (R2D47)

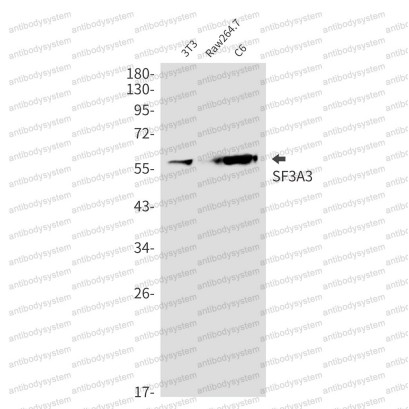
## Summary

---

|                              |   |
|------------------------------|---|
| <b>Catalog No.</b>           | RHG31901  |
| <b>Clone ID</b>              | R2D47   |
| <b>Host species</b>          | Rabbit  |
| <b>Tested applications</b>   | WB: 1:500-1:1000  |
| <b>Species reactivity</b>    | Human, Mouse, Rat, Hamster  |
| <b>Form</b>                  | Liquid  |
| <b>Storage buffer</b>        | 0.01M PBS, pH 7.4, 0.05% BSA, 50% Glycerol, 0.05% Sodium azide.   |
| <b>Concentration</b>         | 1 mg/ml   |
| <b>Purity</b>                | >95% by SDS-PAGE.   |
| <b>Clonality</b>             | Monoclonal  |
| <b>Isotype</b>               | IgG   |
| <b>Applications</b>          | WB  |
| <b>Target</b>                | Splicing factor 3A subunit 3, SF3A3, Spliceosome-associated protein 61, SF3a60, SAP61, SAP 61   |
| <b>Purification</b>          | Protein A/G purified from cell culture supernatant.   |
| <b>Endotoxin level</b>       | Please contact with the lab for this information.   |
| <b>Accession</b>             | Q12874  |
| <b>Stability and Storage</b> | Use a manual defrost freezer and avoid repeated freeze thaw cycles. Store at 4 °C for frequent use. Store at -20 °C for twelve months from the date of receipt. |

**Note** For research use only.

## Data Image



Western blot

Western blot analysis of SF3A3 in 3T3, Raw264.7, C6 lysates using SF3A3 antibody.



Western blot

Western blot analysis of SF3A3 in HeLa, CHO-K1, C6, Jurkat lysates using SF3A3 antibody.