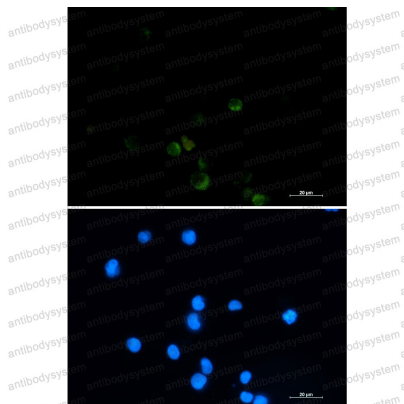


Anti-GRSF1 Antibody (R2D44)

Summary

Catalog No.	RHG30901
Clone ID	R2D44
Host species	Rabbit
Tested applications	IF: 1:50-1:200, WB: 1:500-1:1000
Species reactivity	Human
Form	Liquid
Storage buffer	0.01M PBS, pH 7.4, 0.05% BSA, 50% Glycerol, 0.05% Sodium azide.
Concentration	1 mg/ml
Purity	>95% by SDS-PAGE.
Clonality	Monoclonal
Isotype	IgG
Applications	IF, WB
Target	GRSF1, GRSF-1, G-rich sequence factor 1
Purification	Protein A/G purified from cell culture supernatant.
Endotoxin level	Please contact with the lab for this information.
Accession	Q12849
Stability and Storage	Use a manual defrost freezer and avoid repeated freeze thaw cycles. Store at 4 °C for frequent use. Store at -20 °C for twelve months from the date of receipt.
Note	For research use only.

Data Image



Immunofluorescence

Immunocytochemistry analysis of GRSF1 (green) in CEM using GRSF1 antibody, and DAPI (blue).



Western blot

Western blot analysis of GRSF1 in HeLa, Ramos lysates using GRSF1 antibody.