

Anti-SMARCB1 Antibody (R2D39)

Summary

Catalog No.	RHG30003
Clone ID	R2D39
Host species	Rabbit
Tested applications	IF: 1:50-1:200, IHC: 1:50-1:100, IP: 1:20, WB: 1:500-1:1000
Species reactivity	Human, Mouse, Rat
Form	Liquid
Storage buffer	0.01M PBS, pH 7.4, 0.05% BSA, 50% Glycerol, 0.05% Sodium azide.
Concentration	1 mg/ml
Purity	>95% by SDS-PAGE.
Clonality	Monoclonal
Isotype	IgG
Applications	IF, IHC, IP, WB
Target	SNF5L1, BRG1-associated factor 47, hSNF5, SMARCB1, SWI/SNF-related matrix-associated actin-dependent regulator of chromatin subfamily B member 1, BAF47, Integrase interactor 1 protein, SNF5 homolog, INI1
Purification	Protein A/G purified from cell culture supernatant.
Endotoxin level	Please contact with the lab for this information.
Accession	Q12824

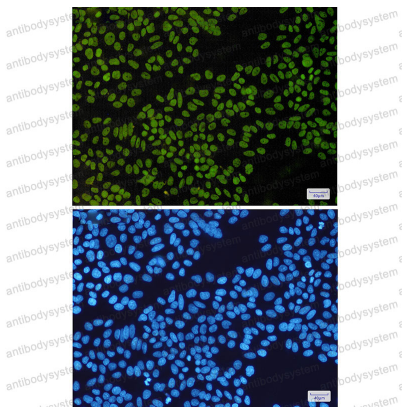
Stability and Storage

Use a manual defrost freezer and avoid repeated freeze thaw cycles. Store at 4 °C for frequent use. Store at -20 °C for twelve months from the date of receipt.

Note

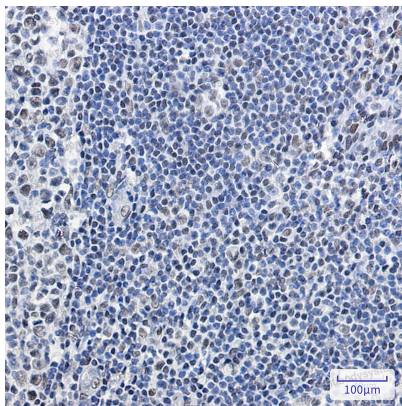
For research use only.

Data Image



Immunofluorescence

Immunocytochemistry analysis of SNF5(green) in Hela using SNF5 antibody, and DAPI(blue)



Immunohistochemical

Immunohistochemistry analysis of paraffin-embedded Human tonsil using SMARCB1 antibody. High-pressure and temperature Sodium Citrate pH 6.0 was used for antigen retrieval.