

Anti-RBBP4 Antibody (R2D32)

Summary

Catalog No.	RHG20101
Clone ID	R2D32
Host species	Rabbit
Tested applications	IF: 1:50-1:200, IHC: 1:50-1:100, IP: 1:20, WB: 1:500-1:1000
Species reactivity	Human, Mouse, Rat, Hamster
Form	Liquid
Storage buffer	0.01M PBS, pH 7.4, 0.05% BSA, 50% Glycerol, 0.05% Sodium azide.
Concentration	1 mg/ml
Purity	>95% by SDS-PAGE.
Clonality	Monoclonal
Isotype	IgG
Applications	IF, IHC, IP, WB
Target	Retinoblastoma-binding protein 4, CAF-1 subunit C, CAF-I p48, Chromatin assembly factor 1 subunit C, Nucleosome-remodeling factor subunit RBAP48, Retinoblastoma-binding protein p48, RBAP48, RBBP-4, Histone-binding protein RBBP4, CAF-I 48 kDa subunit, RBBP4, Chromatin assembly factor I p48 subunit
Purification	Protein A/G purified from cell culture supernatant.
Endotoxin level	Please contact with the lab for this information.
Accession	Q09028

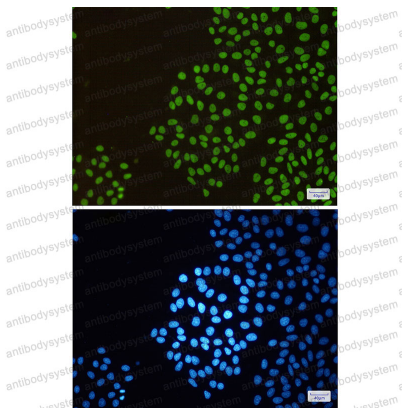
Stability and Storage

Use a manual defrost freezer and avoid repeated freeze thaw cycles. Store at 4 °C for frequent use. Store at -20 °C for twelve months from the date of receipt.

Note

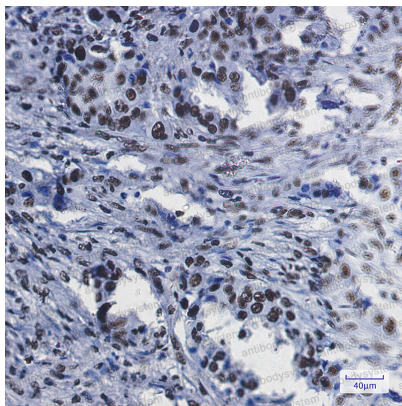
For research use only.

Data Image



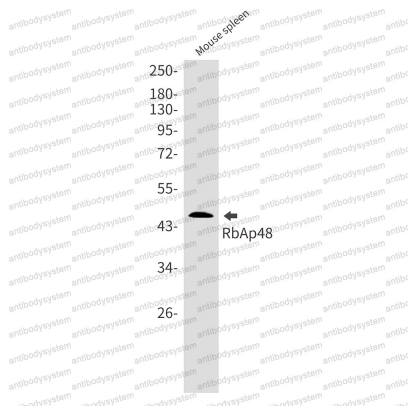
Immunofluorescence

Immunocytochemistry analysis of RbAp48(green) in HeLa using RbAp48 antibody, and DAPI (blue). High-pressure and temperature Sodium Citrate pH6.0 was used for antigen retrieval.



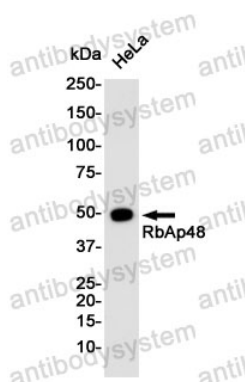
Immunohistochemical

Immunohistochemistry analysis of paraffin-embedded Human lung cancer using RbAp48 antibody. High-pressure and temperature Sodium Citrate pH 6.0 was used for antigen retrieval.



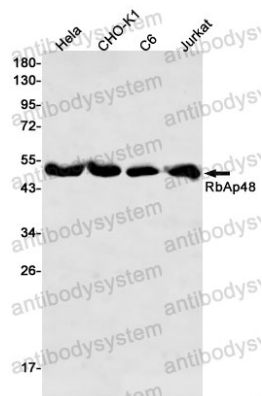
Western blot

Western blot analysis of RbAp48 in mouse spleen lysates using RBBP4 antibody.



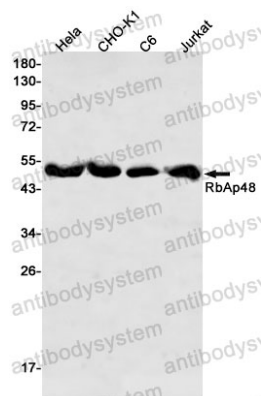
Western blot

Western blot analysis of RbAp48 in HeLa lysates using RbAp48 antibody.



Western blot

Western blot analysis of RbAp48 in HeLa, CHO-K1, C6, Jurkat lysates using RbAp48 antibody



Western blot

Western blot analysis of RbAp48 in HeLa, CHO-K1, C6, Jurkat lysates using RbAp48 antibody