

Anti-LGALS3BP Antibody (R2D26)

Summary

Catalog No.	RHG16202
Clone ID	R2D26
Host species	Rabbit
Tested applications	WB: 1:500-1:1000
Species reactivity	Human
Form	Liquid
Storage buffer	0.01M PBS, pH 7.4, 0.05% BSA, 50% Glycerol, 0.05% Sodium azide.
Concentration	1 mg/ml
Purity	>95% by SDS-PAGE.
Clonality	Monoclonal
Isotype	IgG
Applications	WB
Target	Basement membrane autoantigen p105, Galectin-3-binding protein, MAC2BP, Mac-2 BP, M2BP, Mac-2-binding protein, Tumor-associated antigen 90K, Lectin galactoside-binding soluble 3-binding protein, LGALS3BP
Purification	Protein A/G purified from cell culture supernatant.
Endotoxin level	Please contact with the lab for this information.
Accession	Q08380

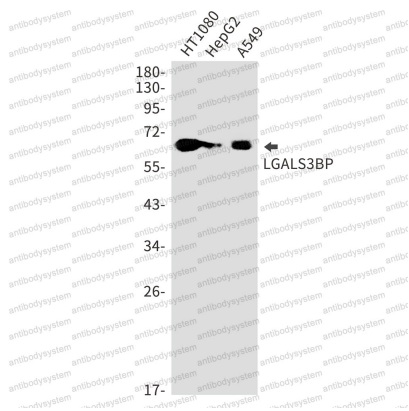
Recombinant Proteins & Antibodies

Stability and Storage

Use a manual defrost freezer and avoid repeated freeze thaw cycles. Store at 4 °C for frequent use. Store at -20 °C for twelve months from the date of receipt.

Note

For research use only.

Data Image

Western blot

Western blot analysis of LGALS3BP in HT-1080, HepG2, A549 lysates using LGALS3BP antibody.