

# Anti-CYP24A1 Antibody (R2D19)

## Summary

---

<b>Catalog No.</b>	RHG14501
<b>Clone ID</b>	R2D19
<b>Host species</b>	Rabbit
<b>Tested applications</b>	WB: 1:1000-1:2000
<b>Species reactivity</b>	Human
<b>Form</b>	Liquid
<b>Storage buffer</b>	0.01M PBS, pH 7.4, 0.05% BSA, 50% Glycerol, 0.05% Sodium azide.
<b>Concentration</b>	1 mg/ml
<b>Purity</b>	>95% by SDS-PAGE.
<b>Clonality</b>	Monoclonal
<b>Isotype</b>	IgG
<b>Applications</b>	WB
<b>Target</b>	CYP24A1, 24-OHase, Vitamin D(3) 24-hydroxylase, Cytochrome P450-CC24, 1,25-dihydroxyvitamin D(3) 24-hydroxylase, mitochondrial, CYP24, Cytochrome P450 24A1
<b>Purification</b>	Protein A/G purified from cell culture supernatant.
<b>Endotoxin level</b>	Please contact with the lab for this information.
<b>Accession</b>	Q07973

**Stability and Storage**

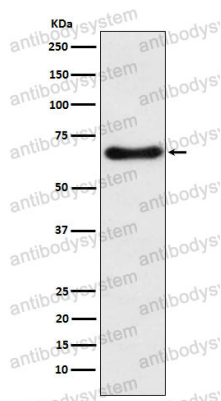
Use a manual defrost freezer and avoid repeated freeze thaw cycles. Store at 4 °C for frequent use. Store at -20 °C for twelve months from the date of receipt.

**Note**

For research use only.

**Data Image**

---



Western blot

Western blot analysis of CYP24A1 expression in Human fetal liver lysate.