

Anti-SRSF1 Antibody (R2D17)

Summary

| | |
|----------------------------|--|
| Catalog No. | RHG14302 |
| Clone ID | R2D17 |
| Host species | Rabbit |
| Tested applications | FCM: 1:20-1:100, IF: 1:50-1:200, IHC: 1:100-1:200, WB: 1:1000-1:2000 |
| Species reactivity | Human, Mouse, Rat |
| Form | Liquid |
| Storage buffer | 0.01M PBS, pH 7.4, 0.05% BSA, 50% Glycerol, 0.05% Sodium azide. |
| Concentration | 1 mg/ml |
| Purity | >95% by SDS-PAGE. |
| Clonality | Monoclonal |
| Isotype | IgG |
| Applications | FCM, IF, IHC, WB |
| Target | Splicing factor, arginine/serine-rich 1, ASF, ASF-1, Serine/arginine-rich splicing factor 1, SF2P33, SFRS1, SRSF1, SF2, Alternative-splicing factor 1, pre-mRNA-splicing factor SF2, P33 subunit |
| Purification | Protein A/G purified from cell culture supernatant. |
| Endotoxin level | Please contact with the lab for this information. |
| Accession | Q07955 |

Stability and Storage

Use a manual defrost freezer and avoid repeated freeze thaw cycles. Store at 4 °C for frequent use. Store at -20 °C for twelve months from the date of receipt.

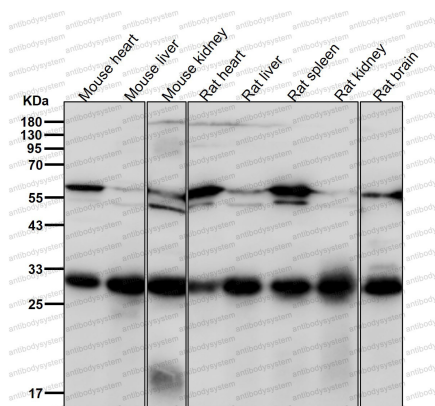
Note

For research use only.

Data Image

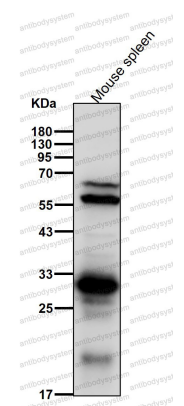
Western blot

Western blot analysis of SF2 expression in mouse spleen lysate.



Western blot

All lanes use the Antibody at 1:2K dilution for 1 hour at room temperature.



Western blot

All lanes use the Antibody at 1:2K dilution for 1 hour at room temperature.