

Anti-MCL1 Antibody (R2D13)

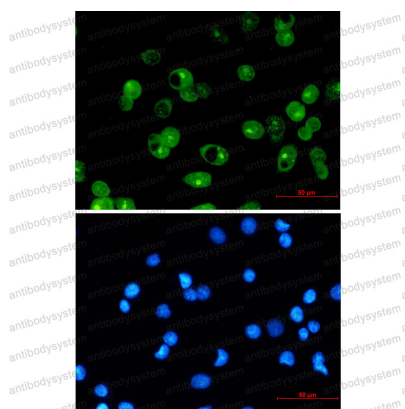
Summary

Catalog No.	RHG13401
Clone ID	R2D13
Host species	Rabbit
Tested applications	IF: 1:50-1:200, IP: 1:20, WB: 1:500-1:1000
Species reactivity	Human, Rat
Form	Liquid
Storage buffer	0.01M PBS, pH 7.4, 0.05% BSA, 50% Glycerol, 0.05% Sodium azide.
Concentration	1 mg/ml
Purity	>95% by SDS-PAGE.
Clonality	Monoclonal
Isotype	IgG
Applications	IF, IP, WB
Target	mcl1/EAT, Bcl2-L-3, Induced myeloid leukemia cell differentiation protein Mcl-1, Bcl-2-like protein 3, BCL2L3, Bcl-2-related protein EAT/mcl1, MCL1
Purification	Protein A/G purified from cell culture supernatant.
Endotoxin level	Please contact with the lab for this information.
Accession	Q07820
Stability and Storage	Use a manual defrost freezer and avoid repeated freeze thaw cycles. Store at 4 °C for frequent use. Store at -20 °C for twelve months from the date of receipt.

Note

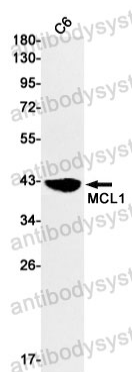
For research use only.

Data Image



Immunofluorescence

Immunocytochemistry analysis of MCL1 (green) in MCF-7 using MCL1 antibody, and DAPI(blue)



Western blot

Western blot analysis of MCL1 in C6 lysates using MCL1 antibody.