

Anti-C1QBP Antibody (R2D02)

Summary

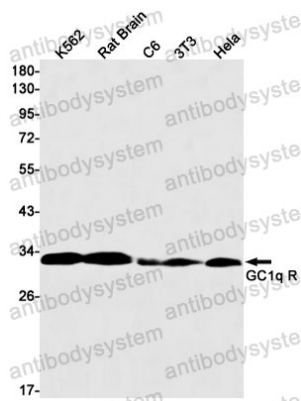
Catalog No.	RHG11205
Clone ID	R2D02
Host species	Rabbit
Tested applications	WB: 1:500-1:1000
Species reactivity	Human, Mouse, Rat
Form	Liquid
Storage buffer	0.01M PBS, pH 7.4, 0.05% BSA, 50% Glycerol, 0.05% Sodium azide.
Concentration	1 mg/ml
Purity	>95% by SDS-PAGE.
Clonality	Monoclonal
Isotype	IgG
Applications	WB
Target	Hyaluronan-binding protein 1, SF2AP32, C1QBP, gC1q-R protein, SF2P32, Glycoprotein gC1qBP, Complement component 1 Q subcomponent-binding protein, mitochondrial, ASF/SF2-associated protein p32, GC1QBP, HABP1, p33, C1qBP, Mitochondrial matrix protein p32
Purification	Protein A/G purified from cell culture supernatant.
Endotoxin level	Please contact with the lab for this information.
Accession	Q07021

Stability and Storage

Use a manual defrost freezer and avoid repeated freeze thaw cycles. Store at 4 °C for frequent use. Store at -20 °C for twelve months from the date of receipt.

Note

For research use only.

Data Image

Western blot

Western blot analysis of GC1q R in K562, rat Brain, C6, 3T3, HeLa lysates using GC1q R antibody.