

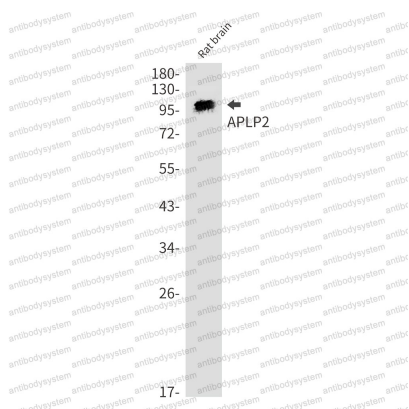
Anti-APLP2 Antibody (R2C89)

Summary

Catalog No.	RHG09203
Clone ID	R2C89
Host species	Rabbit
Tested applications	WB: 1:500-1:1000
Species reactivity	Human, Rat
Form	Liquid
Storage buffer	0.01M PBS, pH 7.4, 0.05% BSA, 50% Glycerol, 0.05% Sodium azide.
Concentration	1 mg/ml
Purity	>95% by SDS-PAGE.
Clonality	Monoclonal
Isotype	IgG
Applications	WB
Target	APPH, APLP-2, CDEBP, Amyloid protein homolog, CDEI box-binding protein, APLP2, APPL2, Amyloid-like protein 2
Purification	Protein A/G purified from cell culture supernatant.
Endotoxin level	Please contact with the lab for this information.
Accession	Q06481
Stability and Storage	Use a manual defrost freezer and avoid repeated freeze thaw cycles. Store at 4 °C for frequent use. Store at -20 °C for twelve months from the date of receipt.

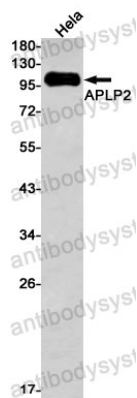
Note For research use only.

Data Image



Western blot

Western blot analysis of APLP2 in rat brain lysates using APLP2 antibody.



Western blot

Western blot analysis of APLP2 in Hela lysates using APLP2 antibody.