

Anti-PSME1 Antibody (R2C83)

Summary

Catalog No.	RHG08501
Clone ID	R2C83
Host species	Rabbit
Tested applications	IF: 1:50-1:200, IP: 1:20-1:50, WB: 1:1000-1:2000
Species reactivity	Human, Mouse, Rat
Form	Liquid
Storage buffer	0.01M PBS, pH 7.4, 0.05% BSA, 50% Glycerol, 0.05% Sodium azide.
Concentration	1 mg/ml
Purity	>95% by SDS-PAGE.
Clonality	Monoclonal
Isotype	IgG
Applications	IF, IP, WB
Target	11S regulator complex subunit alpha, Proteasome activator complex subunit 1, Proteasome activator 28 subunit alpha, IGUP I-5111, Interferon gamma up-regulated I-5111 protein, PA28a, Activator of multicatalytic protease subunit 1, PSME1, IFI5111, REG-alpha, PA28alpha
Purification	Protein A/G purified from cell culture supernatant.
Endotoxin level	Please contact with the lab for this information.
Accession	Q06323

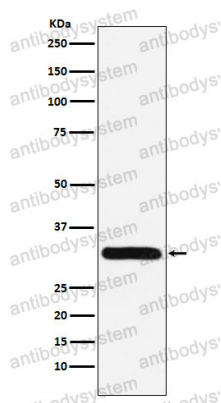
Stability and Storage

Use a manual defrost freezer and avoid repeated freeze thaw cycles. Store at 4 °C for frequent use. Store at -20 °C for twelve months from the date of receipt.

Note

For research use only.

Data Image



Western blot

Western blot analysis of PSME1 expression in Jurkat cell lysate.