

# Anti-Phospho-PKC zeta/lambda (Thr410/Thr412) Antibody (R2C63)

## Summary

---

|                            |   |
|----------------------------|---|
| <b>Catalog No.</b>         | RHG05001  |
| <b>Clone ID</b>            | R2C63   |
| <b>Host species</b>        | Rabbit  |
| <b>Tested applications</b> | IHC: 1:50-1:100, WB: 1:500-1:1000                               |
| <b>Species reactivity</b>  | Human, Mouse  |
| <b>Form</b>                | Liquid  |
| <b>Storage buffer</b>      | 0.01M PBS, pH 7.4, 0.05% BSA, 50% Glycerol, 0.05% Sodium azide. |
| <b>Concentration</b>       | 1 mg/ml   |
| <b>Purity</b>              | >95% by SDS-PAGE.   |
| <b>Clonality</b>           | Monoclonal  |
| <b>Isotype</b>             | IgG   |
| <b>Applications</b>        | IHC, WB   |
| <b>Target</b>              | PKC2, nPKC-zeta, PRKCZ, Protein kinase C zeta type              |
| <b>Purification</b>        | Protein A/G purified from cell culture supernatant.             |
| <b>Endotoxin level</b>     | Please contact with the lab for this information.               |
| <b>Accession</b>           | Q05513  |

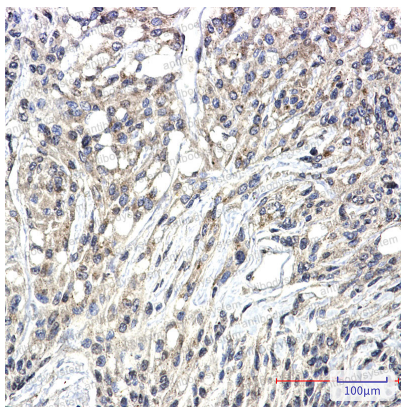
### Stability and Storage

Use a manual defrost freezer and avoid repeated freeze thaw cycles. Store at 4 °C for frequent use. Store at -20 °C for twelve months from the date of receipt.

### Note

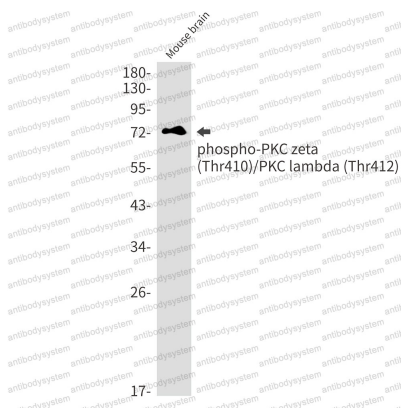
For research use only.

## Data Image



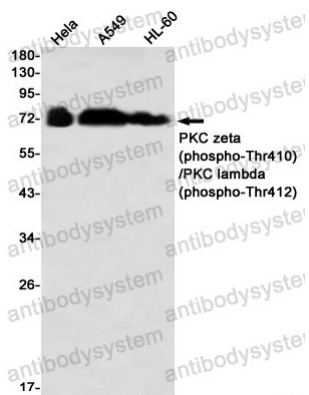
Immunohistochemical

Immunohistochemistry analysis of paraffin-embedded Human Brain using PKC zeta (Phospho-Thr410)/PKC lambda (Phospho-Thr412) antibody. High-pressure and temperature Sodium Citrate pH 6.0 was used for antigen retrieval.



Western blot

Western blot analysis of Phospho-PKC zeta (Thr410)/PKC lambda (Thr412) in mouse brain lysates using Phospho-PKC zeta/lambda (Thr410/Thr412) antibody.



Western blot

Western blot analysis of PKC zeta (Phospho-Thr410)/PKC lambda (Phospho-Thr412) in HeLa, A549, HL-60 lysates using PKC zeta (Phospho-Thr410)/PKC lambda (Phospho-Thr412) antibody.