

# Anti-Phospho-LIPE (Ser855) Antibody (R2C60)

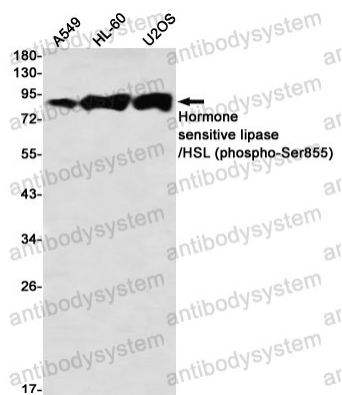
## Summary

---

<b>Catalog No.</b>	RHG04801
<b>Clone ID</b>	R2C60
<b>Host species</b>	Rabbit
<b>Tested applications</b>	WB: 1:500-1:1000
<b>Species reactivity</b>	Human
<b>Form</b>	Liquid
<b>Storage buffer</b>	0.01M PBS, pH 7.4, 0.05% BSA, 50% Glycerol, 0.05% Sodium azide.
<b>Concentration</b>	1 mg/ml
<b>Purity</b>	>95% by SDS-PAGE.
<b>Clonality</b>	Monoclonal
<b>Isotype</b>	IgG
<b>Applications</b>	WB
<b>Target</b>	Monoacylglycerol lipase LIPE, LIPE, HSL, Retinyl ester hydrolase, REH, Hormone-sensitive lipase
<b>Purification</b>	Protein A/G purified from cell culture supernatant.
<b>Endotoxin level</b>	Please contact with the lab for this information.
<b>Accession</b>	Q05469
<b>Stability and Storage</b>	Use a manual defrost freezer and avoid repeated freeze thaw cycles. Store at 4 °C for frequent use. Store at -20 °C for twelve months from the date of receipt.

**Note**

For research use only.

**Data Image**

Western blot

Western blot analysis of Hormone sensitive lipase/HSL (Phospho-Ser855) in A549, HL-60, U2OS lysates using Phospho-Hormone Sensitive Lipase (Ser855) antibody.