

Anti-Phospho-LIPE/HSL (S853) Antibody (R2C59)

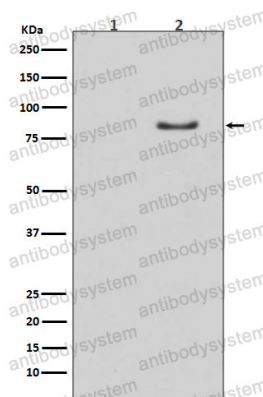
Summary

Catalog No.	RHG04802
Clone ID	R2C59
Host species	Rabbit
Tested applications	WB: 1:1000-1:5000
Species reactivity	Human, Mouse, Rat
Form	Liquid
Storage buffer	0.01M PBS, pH 7.4, 0.05% BSA, 50% Glycerol, 0.05% Sodium azide.
Concentration	1 mg/ml
Purity	>95% by SDS-PAGE.
Clonality	Monoclonal
Isotype	IgG
Applications	WB
Target	Monoacylglycerol lipase LIPE, LIPE, HSL, Retinyl ester hydrolase, REH, Hormone-sensitive lipase
Purification	Protein A/G purified from cell culture supernatant.
Endotoxin level	Please contact with the lab for this information.
Accession	Q05469
Stability and Storage	Use a manual defrost freezer and avoid repeated freeze thaw cycles. Store at 4 °C for frequent use. Store at -20 °C for twelve months from the date of receipt.

Note

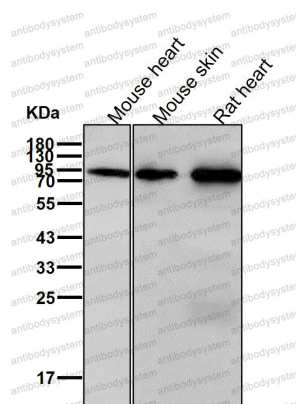
For research use only.

Data Image



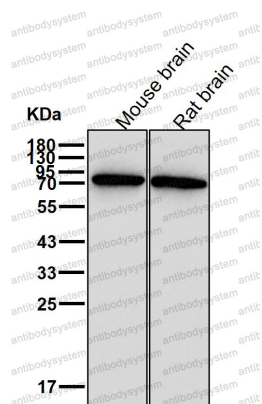
Western blot

Western blot analysis of Phospho-HSL (S853) expression in (1) Mouse muscle lysate; (2) Mouse muscle lysate treated with AP.



Western blot

All lanes use the Antibody at 1:5K dilution for 1 hour at room temperature.



Western blot

All lanes use the Antibody at 1:5K dilution for 1 hour at room temperature.