

Anti-UBE3A Antibody (R2C54)

Summary

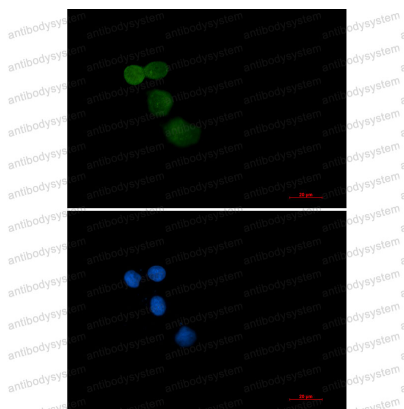
Catalog No.	RHG04001
Clone ID	R2C54
Host species	Rabbit
Tested applications	IF: 1:50-1:200, IP: 1:20, WB: 1:500-1:1000
Species reactivity	Human, Mouse, Rat
Form	Liquid
Storage buffer	0.01M PBS, pH 7.4, 0.05% BSA, 50% Glycerol, 0.05% Sodium azide.
Concentration	1 mg/ml
Purity	>95% by SDS-PAGE.
Clonality	Monoclonal
Isotype	IgG
Applications	IF, IP, WB
Target	Oncogenic protein-associated protein E6-AP, Ubiquitin-protein ligase E3A, UBE3A, E6AP ubiquitin-protein ligase, HPVE6A, EPVE6AP, HECT-type ubiquitin transferase E3A, E6AP, Human papillomavirus E6-associated protein, Renal carcinoma antigen NY-REN-54
Purification	Protein A/G purified from cell culture supernatant.
Endotoxin level	Please contact with the lab for this information.
Accession	Q05086

Stability and Storage

Use a manual defrost freezer and avoid repeated freeze thaw cycles. Store at 4 °C for frequent use. Store at -20 °C for twelve months from the date of receipt.

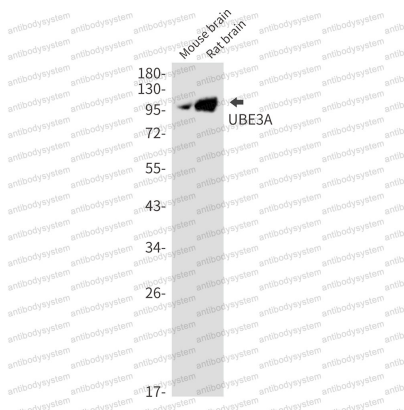
Note

For research use only.

Data Image

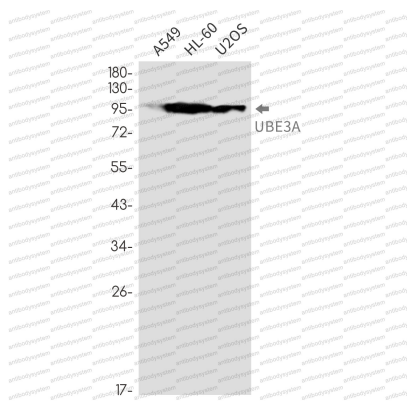
Immunofluorescence

Immunocytochemistry analysis of Ubiquitin Protein Ligase E3A (green) in Hela using Ubiquitin Protein Ligase E3A antibody, and DAPI (blue).



Western blot

Western blot analysis of UBE3A in mouse brain, rat brain lysates using UBE3A antibody.



Western blot

Western blot analysis of UBE3A in A549, HL-60, U2OS lysates using UBE3A antibody