

Anti-UBE3A Antibody (R2C53)

Summary

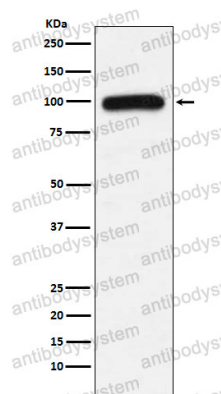
Catalog No.	RHG04002
Clone ID	R2C53
Host species	Rabbit
Tested applications	WB: 1:1000-1:2000
Species reactivity	Human, Mouse, Rat
Form	Liquid
Storage buffer	0.01M PBS, pH 7.4, 0.05% BSA, 50% Glycerol, 0.05% Sodium azide.
Concentration	1 mg/ml
Purity	>95% by SDS-PAGE.
Clonality	Monoclonal
Isotype	IgG
Applications	WB
Target	Oncogenic protein-associated protein E6-AP, Ubiquitin-protein ligase E3A, UBE3A, E6AP ubiquitin-protein ligase, HPVE6A, EPVE6AP, HECT-type ubiquitin transferase E3A, E6AP, Human papillomavirus E6-associated protein, Renal carcinoma antigen NY-REN-54
Purification	Protein A/G purified from cell culture supernatant.
Endotoxin level	Please contact with the lab for this information.
Accession	Q05086

Stability and Storage

Use a manual defrost freezer and avoid repeated freeze thaw cycles. Store at 4 °C for frequent use. Store at -20 °C for twelve months from the date of receipt.

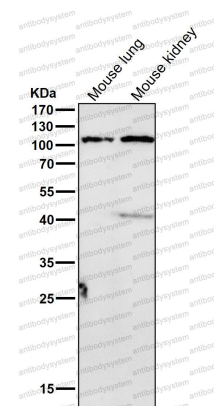
Note

For research use only.

Data Image

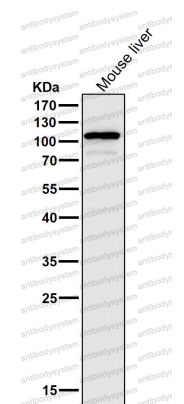
Western blot

Western blot analysis of UBE3A expression in K562 cell lysate.



Western blot

All lanes use the Antibody at 1:2K dilution for 1 hour at room temperature.



Western blot

All lanes use the Antibody at 1:2K dilution for 1 hour at room temperature.