

# Recombinant Human MYL2 Protein, N-His

## Summary

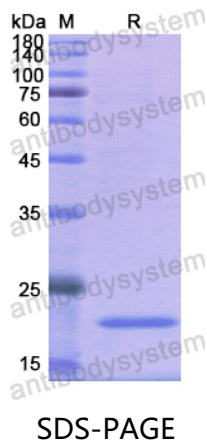
---

<b>Catalog No.</b>	YHC84601
<b>Alternative Names</b>	Ventricular myosin light chain 2, Myosin light chain 2, slow skeletal/ventricular muscle isoform, Cardiac myosin light chain 2, MLC-2v, MLC-2s/v, MLC-2, Myosin regulatory light chain 2, ventricular/cardiac muscle isoform, MLC2, MYL2
<b>Form</b>	Lyophilized
<b>Storage buffer</b>	Lyophilized from a solution in PBS pH 7.4, 0.02% NLS, 1mM EDTA, 4% Trehalose, 1% Mannitol.
<b>Purity</b>	>90% as determined by SDS-PAGE.
<b>Applications</b>	ELISA, Immunogen, SDS-PAGE, WB, Bioactivity testing in progress
<b>Endotoxin level</b>	Please contact with the lab for this information.
<b>Expression system</b>	E. coli
<b>Accession</b>	P10916
<b>Protein length</b>	Ala2-Ile159
<b>Nature</b>	Recombinant
<b>Predicted molecular weight</b>	20.17 kDa
<b>Stability and Storage</b>	Use a manual defrost freezer and avoid repeated freeze thaw cycles. Store at 2 to 8°C for frequent use. Store at -20 to -80°C for twelve months from the date of receipt.
<b>Reconstitution</b>	Reconstitute in sterile water for a stock solution. A copy of datasheet will be provided with the products, please refer to it for details.

## Recombinant Proteins &amp; Antibodies

Species	Homo sapiens (Human)
Shipping	In general, proteins are provided as lyophilized powder/frozen liquid. They are shipped out with dry ice/blue ice unless customers require otherwise.
Note	For research use only.

## Data Image



SDS PAGE for recombinant Human MYL2 protein