

Anti-GLO1 Antibody (R2C49)

Summary

| | |
|----------------------------|---|
| Catalog No. | RHG02701 |
| Clone ID | R2C49 |
| Host species | Rabbit |
| Tested applications | FCM: 1:20-1:100, WB: 1:1000-1:2000 |
| Species reactivity | Human, Mouse, Rat |
| Form | Liquid |
| Storage buffer | 0.01M PBS, pH 7.4, 0.05% BSA, 50% Glycerol, 0.05% Sodium azide. |
| Concentration | 1 mg/ml |
| Purity | >95% by SDS-PAGE. |
| Clonality | Monoclonal |
| Isotype | IgG |
| Applications | FCM, WB |
| Target | Glyoxalase I, Glx I, Ketone-aldehyde mutase, GLO1, Lactoylglutathione lyase, Methylglyoxalase, S-D-lactoylglutathione methylglyoxal lyase, Aldoketomutase |
| Purification | Protein A/G purified from cell culture supernatant. |
| Endotoxin level | Please contact with the lab for this information. |
| Accession | Q04760 |

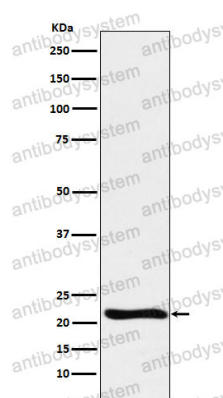
Stability and Storage

Use a manual defrost freezer and avoid repeated freeze thaw cycles. Store at 4 °C for frequent use. Store at -20 °C for twelve months from the date of receipt.

Note

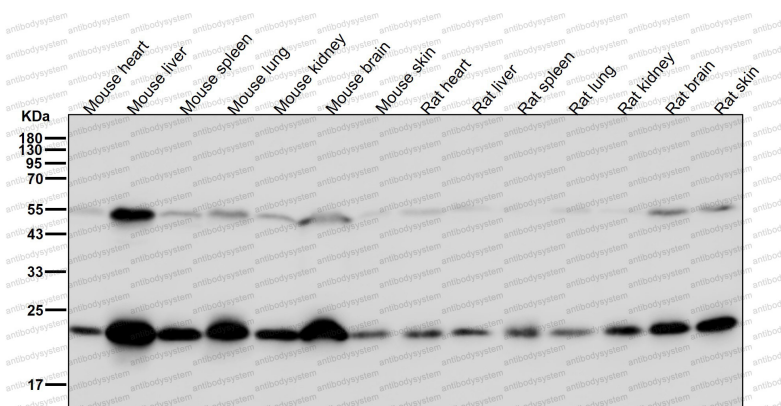
For research use only.

Data Image



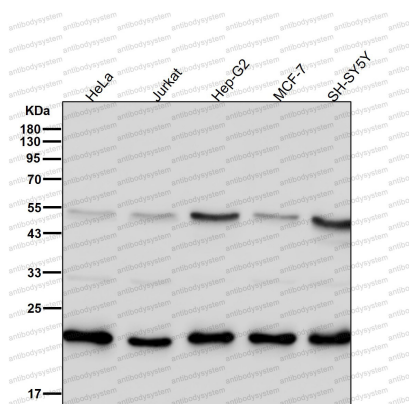
Western blot

Western blot analysis of GLO1 expression in Raji cell lysate.



Western blot

All lanes use the Antibody at 1:2K dilution for 1 hour at room temperature.



Western blot

All lanes use the Antibody at 1:2K dilution for 1 hour at room temperature.