

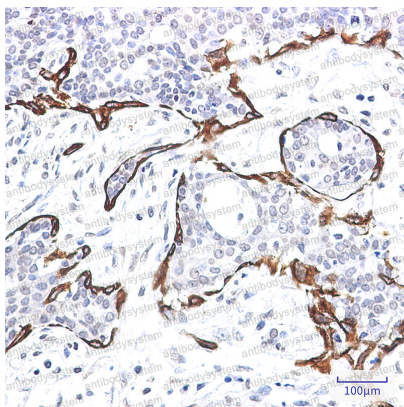
Anti-KRT17 Antibody (R2C45)

Summary

Catalog No.	RHG01701
Clone ID	R2C45
Host species	Rabbit
Tested applications	IHC: 1:50-1:100, IP: 1:20, WB: 1:500-1:1000
Species reactivity	Human
Form	Liquid
Storage buffer	0.01M PBS, pH 7.4, 0.05% BSA, 50% Glycerol, 0.05% Sodium azide.
Concentration	1 mg/ml
Purity	>95% by SDS-PAGE.
Clonality	Monoclonal
Isotype	IgG
Applications	IHC, IP, WB
Target	Keratin-17, CK-17, Cytokeratin-17, 39.1, Keratin, type I cytoskeletal 17, K17, KRT17
Purification	Protein A/G purified from cell culture supernatant.
Endotoxin level	Please contact with the lab for this information.
Accession	Q04695
Stability and Storage	Use a manual defrost freezer and avoid repeated freeze thaw cycles. Store at 4 °C for frequent use. Store at -20 °C for twelve months from the date of receipt.

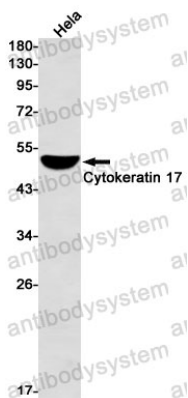
Note

For research use only.

Data Image

Immunohistochemical

Immunohistochemistry analysis of paraffin-embedded Human breast cancer using Cytokeratin 17 antibody. High-pressure and temperature Sodium Citrate pH 6.0 was used for antigen retrieval.



Western blot

Western blot analysis of Cytokeratin 17 in HeLa lysates using Cytokeratin 17 antibody.