

Anti-CENPC Antibody (R2C34)

Summary

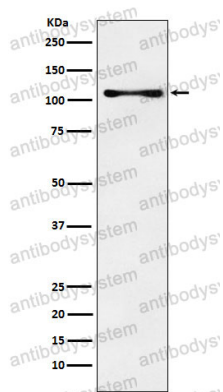
Catalog No.	RHF98602
Clone ID	R2C34
Host species	Rabbit
Tested applications	FCM: 1:20-1:100, IF: 1:50-1:200, IHC: 1:100-1:200, IP: 1:20-1:50, WB: 1:1000-1:2000
Species reactivity	Human, Mouse, Rat
Form	Liquid
Storage buffer	0.01M PBS, pH 7.4, 0.05% BSA, 50% Glycerol, 0.05% Sodium azide.
Concentration	1 mg/ml
Purity	>95% by SDS-PAGE.
Clonality	Monoclonal
Isotype	IgG
Applications	FCM, IF, IHC, IP, WB
Target	CENP-C, CENP-C 1, ICEN7, Centromere protein C, Centromere protein C 1, CENPC1, Centromere autoantigen C, CENPC, Interphase centromere complex protein 7
Purification	Protein A/G purified from cell culture supernatant.
Endotoxin level	Please contact with the lab for this information.
Accession	Q03188

Stability and Storage

Use a manual defrost freezer and avoid repeated freeze thaw cycles. Store at 4 °C for frequent use. Store at -20 °C for twelve months from the date of receipt.

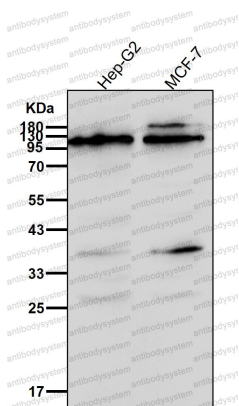
Note

For research use only.

Data Image

Western blot

Western blot analysis of CENPC expression in K562 cell lysate.



Western blot

All lanes use the Antibody at 1:1K dilution for 1 hour at room temperature.