

Anti-MAP2K1 Antibody (R2C24)

Summary

Catalog No.	RHF95508
Clone ID	R2C24
Host species	Rabbit
Tested applications	IF: 1:50-1:200, IP: 1:20, WB: 1:500-1:1000
Species reactivity	Human
Form	Liquid
Storage buffer	0.01M PBS, pH 7.4, 0.05% BSA, 50% Glycerol, 0.05% Sodium azide.
Concentration	1 mg/ml
Purity	>95% by SDS-PAGE.
Clonality	Monoclonal
Isotype	IgG
Applications	IF, IP, WB
Target	ERK activator kinase 1, MKK1, MAPK/ERK kinase 1, MAPKK 1, MAP kinase kinase 1, MEK 1, MEK1, Dual specificity mitogen-activated protein kinase kinase 1, PRKMK1, MAP2K1
Purification	Protein A/G purified from cell culture supernatant.
Endotoxin level	Please contact with the lab for this information.
Accession	Q02750

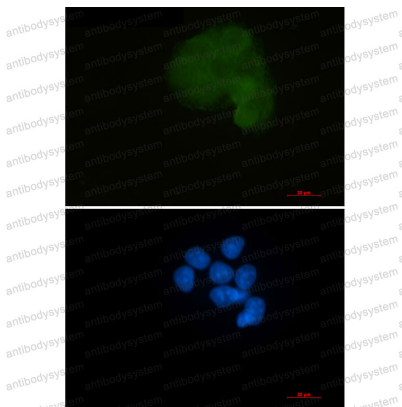
Stability and Storage

Use a manual defrost freezer and avoid repeated freeze thaw cycles. Store at 4 °C for frequent use. Store at -20 °C for twelve months from the date of receipt.

Note

For research use only.

Data Image



Immunofluorescence

Immunocytochemistry analysis of MEK1 (green) in Hela using MEK1 antibody, and DAPI (blue).