

# Anti-Phospho-MAP2K1/MEK1 (Ser298) Antibody (R2C22)

## Summary

---

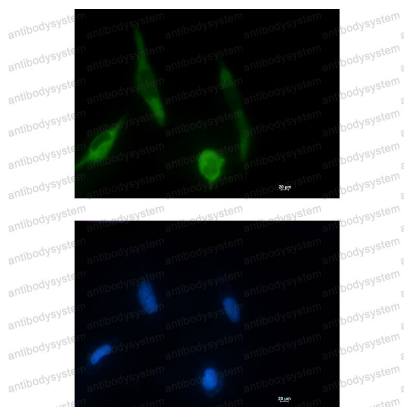
<b>Catalog No.</b>	RHF95506
<b>Clone ID</b>	R2C22
<b>Host species</b>	Rabbit
<b>Tested applications</b>	IF: 1:50-1:200, WB: 1:500-1:1000
<b>Species reactivity</b>	Human, Mouse, Rat
<b>Form</b>	Liquid
<b>Storage buffer</b>	0.01M PBS, pH 7.4, 0.05% BSA, 50% Glycerol, 0.05% Sodium azide.
<b>Concentration</b>	1 mg/ml
<b>Purity</b>	>95% by SDS-PAGE.
<b>Clonality</b>	Monoclonal
<b>Isotype</b>	IgG
<b>Applications</b>	IF, WB
<b>Target</b>	ERK activator kinase 1, MKK1, MAPK/ERK kinase 1, MAPKK 1, MAP kinase kinase 1, MEK 1, MEK1, Dual specificity mitogen-activated protein kinase kinase 1, PRKMK1, MAP2K1
<b>Purification</b>	Protein A/G purified from cell culture supernatant.
<b>Endotoxin level</b>	Please contact with the lab for this information.
<b>Accession</b>	Q02750

**Stability and Storage**

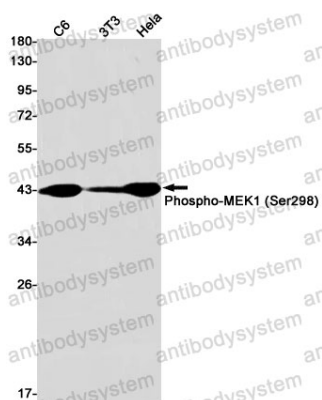
Use a manual defrost freezer and avoid repeated freeze thaw cycles. Store at 4 °C for frequent use. Store at -20 °C for twelve months from the date of receipt.

**Note**

For research use only.

**Data Image**

Immunofluorescence



Western blot

Immunocytochemistry analysis of Phospho-MEK1 (Ser298) (green) in HT-1080 using Phospho-MEK1 (Ser298) antibody, and DAPI (blue).

Western blot analysis of Phospho-MEK1 (Ser298) in C6, 3T3, HeLa lysates using Phospho-MEK1 (Ser298) antibody.