

# Anti-CENPE Antibody (R2C14)

## Summary

---

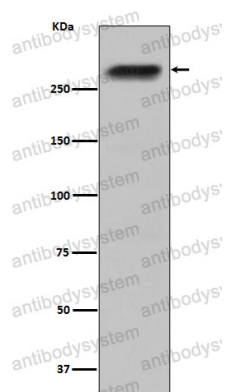
|                              |   |
|------------------------------|---|
| <b>Catalog No.</b>           | RHF92502  |
| <b>Clone ID</b>              | R2C14   |
| <b>Host species</b>          | Rabbit  |
| <b>Tested applications</b>   | WB: 1:1000-1:2000   |
| <b>Species reactivity</b>    | Human   |
| <b>Form</b>                  | Liquid  |
| <b>Storage buffer</b>        | 0.01M PBS, pH 7.4, 0.05% BSA, 50% Glycerol, 0.05% Sodium azide.   |
| <b>Concentration</b>         | 1 mg/ml   |
| <b>Purity</b>                | >95% by SDS-PAGE.   |
| <b>Clonality</b>             | Monoclonal  |
| <b>Isotype</b>               | IgG   |
| <b>Applications</b>          | WB  |
| <b>Target</b>                | CENP-E, CENPE, Kinesin-related protein CENPE, Centromere-associated protein E, Centromere protein E, Kinesin-7  |
| <b>Purification</b>          | Protein A/G purified from cell culture supernatant.   |
| <b>Endotoxin level</b>       | Please contact with the lab for this information.   |
| <b>Accession</b>             | Q02224  |
| <b>Stability and Storage</b> | Use a manual defrost freezer and avoid repeated freeze thaw cycles. Store at 4 °C for frequent use. Store at -20 °C for twelve months from the date of receipt. |

**Note**

For research use only.

## Data Image

---



Western blot

Western blot analysis of CENPE expression in HepG2 cell lysate.