

Anti-MEF2A Antibody (R2C09)

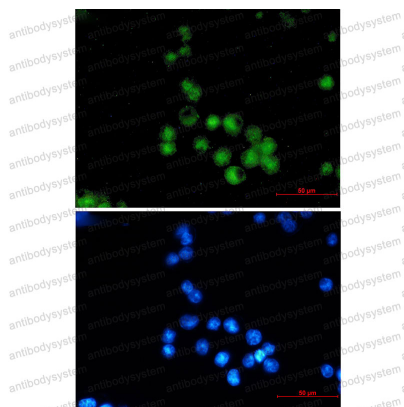
Summary

Catalog No.	RHF91201
Clone ID	R2C09
Host species	Rabbit
Tested applications	IF: 1:50-1:200, WB: 1:500-1:1000
Species reactivity	Human, Mouse, Rat
Form	Liquid
Storage buffer	0.01M PBS, pH 7.4, 0.05% BSA, 50% Glycerol, 0.05% Sodium azide.
Concentration	1 mg/ml
Purity	>95% by SDS-PAGE.
Clonality	Monoclonal
Isotype	IgG
Applications	IF, WB
Target	Myocyte-specific enhancer factor 2A, MEF2, Serum response factor-like protein 1, MEF2A
Purification	Protein A/G purified from cell culture supernatant.
Endotoxin level	Please contact with the lab for this information.
Accession	Q02078
Stability and Storage	Use a manual defrost freezer and avoid repeated freeze thaw cycles. Store at 4 °C for frequent use. Store at -20 °C for twelve months from the date of receipt.

Note

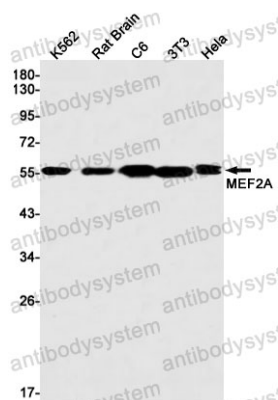
For research use only.

Data Image



Immunofluorescence

Immunocytochemistry analysis of MEF2A (green) in MCF-7 using MEF2A antibody, and DAPI (blue)



Western blot

Western blot analysis of MEF2A in K562, rat Brain, C6, 3T3, HeLa lysates using MEF2A antibody.