

Anti-PLCB3 Antibody (R2C06)

Summary

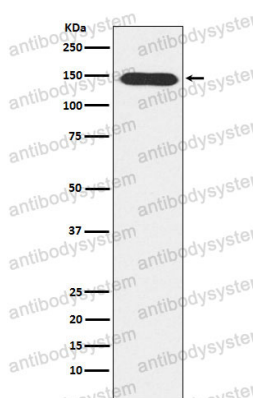
Catalog No.	RHF90602
Clone ID	R2C06
Host species	Rabbit
Tested applications	IHC: 1:100-1:200, WB: 1:1000-1:2000
Species reactivity	Human
Form	Liquid
Storage buffer	0.01M PBS, pH 7.4, 0.05% BSA, 50% Glycerol, 0.05% Sodium azide.
Concentration	1 mg/ml
Purity	>95% by SDS-PAGE.
Clonality	Monoclonal
Isotype	IgG
Applications	IHC, WB
Target	Phospholipase C-beta-3, PLC-beta-3, 1-phosphatidylinositol 4,5-bisphosphate phosphodiesterase beta-3, Phosphoinositide phospholipase C-beta-3, PLCB3
Purification	Protein A/G purified from cell culture supernatant.
Endotoxin level	Please contact with the lab for this information.
Accession	Q01970

Stability and Storage

Use a manual defrost freezer and avoid repeated freeze thaw cycles. Store at 4 °C for frequent use. Store at -20 °C for twelve months from the date of receipt.

Note

For research use only.

Data Image

Western blot

Western blot analysis of PLCB3 expression in A431 cell lysate.