

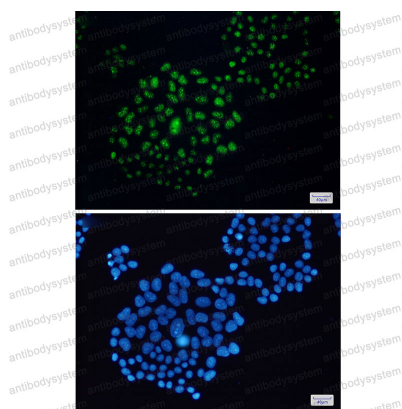
Anti-EWSR1 Antibody (R2C04)

Summary

Catalog No.	RHF89701
Clone ID	R2C04
Host species	Rabbit
Tested applications	IF: 1:50-1:200, WB: 1:500-1:1000
Species reactivity	Human, Mouse, Rat
Form	Liquid
Storage buffer	0.01M PBS, pH 7.4, 0.05% BSA, 50% Glycerol, 0.05% Sodium azide.
Concentration	1 mg/ml
Purity	>95% by SDS-PAGE.
Clonality	Monoclonal
Isotype	IgG
Applications	IF, WB
Target	RNA-binding protein EWS, EWS oncogene, EWS, EWSR1, Ewing sarcoma breakpoint region 1 protein
Purification	Protein A/G purified from cell culture supernatant.
Endotoxin level	Please contact with the lab for this information.
Accession	Q01844
Stability and Storage	Use a manual defrost freezer and avoid repeated freeze thaw cycles. Store at 4 °C for frequent use. Store at -20 °C for twelve months from the date of receipt.

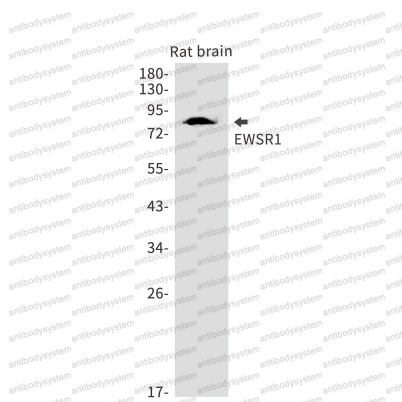
Note For research use only.

Data Image



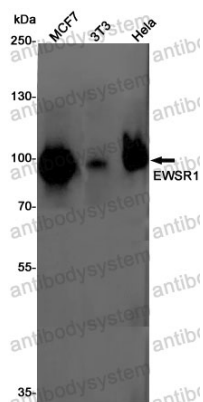
Immunofluorescence

Immunocytochemistry analysis of EWSR1(green) in Hela using EWSR1 antibody, and DAPI(blue)



Western blot

Western blot analysis of EWSR1 in rat brain lysates using EWSR1 antibody.



Western blot

Western blot analysis of EWSR1 in MCF-7, 3T3, HeLa lysates using EWSR1 antibody.