

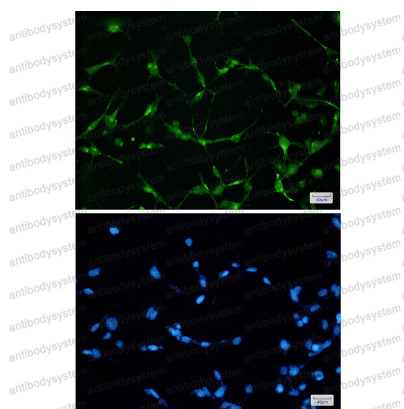
Anti-EWSR1 Antibody (R2C03)

Summary

| | |
|------------------------------|---|
| Catalog No. | RHF89703 |
| Clone ID | R2C03 |
| Host species | Rabbit |
| Tested applications | IF: 1:50-1:200, WB: 1:500-1:1000 |
| Species reactivity | Human |
| Form | Liquid |
| Storage buffer | 0.01M PBS, pH 7.4, 0.05% BSA, 50% Glycerol, 0.05% Sodium azide. |
| Concentration | 1 mg/ml |
| Purity | >95% by SDS-PAGE. |
| Clonality | Monoclonal |
| Isotype | IgG |
| Applications | IF, WB |
| Target | RNA-binding protein EWS, EWS oncogene, EWS, EWSR1, Ewing sarcoma breakpoint region 1 protein |
| Purification | Protein A/G purified from cell culture supernatant. |
| Endotoxin level | Please contact with the lab for this information. |
| Accession | Q01844 |
| Stability and Storage | Use a manual defrost freezer and avoid repeated freeze thaw cycles. Store at 4 °C for frequent use. Store at -20 °C for twelve months from the date of receipt. |

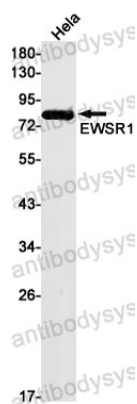
Note

For research use only.

Data Image

Immunofluorescence

Immunocytochemistry analysis of EWSR1 (green) in 293t using EWSR1 antibody, and DAPI (blue).



Western blot

Western blot analysis of EWSR1 in HeLa lysates using EWSR1 antibody.