

# Anti-Phospho-HSF1 (Ser303/Ser307) Antibody (R2B80)

## Summary

---

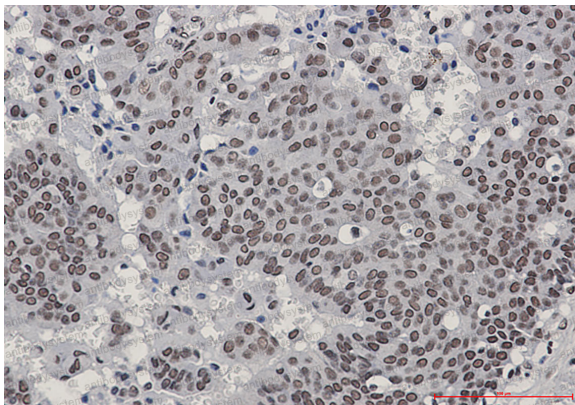
<b>Catalog No.</b>	RHF83002
<b>Clone ID</b>	R2B80
<b>Host species</b>	Rabbit
<b>Tested applications</b>	IHC: 1:50-1:100, WB: 1:500-1:1000
<b>Species reactivity</b>	Human
<b>Form</b>	Liquid
<b>Storage buffer</b>	0.01M PBS, pH 7.4, 0.05% BSA, 50% Glycerol, 0.05% Sodium azide.
<b>Concentration</b>	1 mg/ml
<b>Purity</b>	>95% by SDS-PAGE.
<b>Clonality</b>	Monoclonal
<b>Isotype</b>	IgG
<b>Applications</b>	IHC, WB
<b>Target</b>	Heat shock factor protein 1, HSF 1, HSTF 1, HSF1, HSTF1, Heat shock transcription factor 1
<b>Purification</b>	Protein A/G purified from cell culture supernatant.
<b>Endotoxin level</b>	Please contact with the lab for this information.
<b>Accession</b>	Q00613

**Stability and Storage**

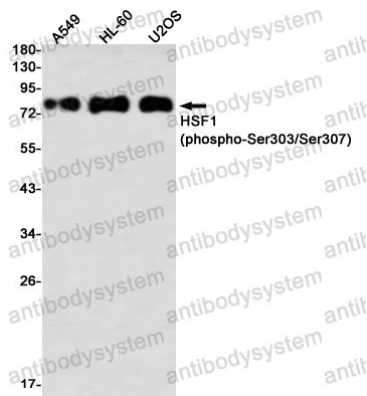
Use a manual defrost freezer and avoid repeated freeze thaw cycles. Store at 4 °C for frequent use. Store at -20 °C for twelve months from the date of receipt.

**Note**

For research use only.

**Data Image**

Immunohistochemical



Western blot

Immunohistochemistry analysis of paraffin-embedded Human breast cancer using HSF1 (Phospho-Ser303/Ser307) antibody. High-pressure and temperature Sodium Citrate pH 6.0 was used for antigen retrieval.

Western blot analysis of HSF1 (Phospho-Ser303/Ser307) in A549, HL-60, U2OS lysates using Phospho-HSF1 (Ser303/Ser307) antibody.