

Anti-TFAM Antibody (R2B66)

Summary

Catalog No.	RHF81201
Clone ID	R2B66
Host species	Rabbit
Tested applications	IF: 1:50-1:200, IHC: 1:50-1:100, IP: 1:20, WB: 1:500-1:1000
Species reactivity	Human
Form	Liquid
Storage buffer	0.01M PBS, pH 7.4, 0.05% BSA, 50% Glycerol, 0.05% Sodium azide.
Concentration	1 mg/ml
Purity	>95% by SDS-PAGE.
Clonality	Monoclonal
Isotype	IgG
Applications	IF, IHC, IP, WB
Target	Transcription factor 6-like 2, Mitochondrial transcription factor 1, MtTF1, mtTFA, Transcription factor 6, TCF6, TCF6L2, Transcription factor A, mitochondrial, TCF-6, TFAM
Purification	Protein A/G purified from cell culture supernatant.
Endotoxin level	Please contact with the lab for this information.
Accession	Q00059

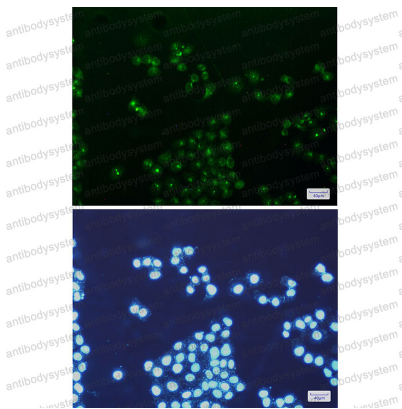
Stability and Storage

Use a manual defrost freezer and avoid repeated freeze thaw cycles. Store at 4 °C for frequent use. Store at -20 °C for twelve months from the date of receipt.

Note

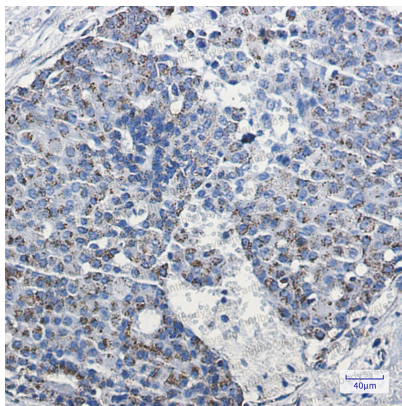
For research use only.

Data Image



Immunofluorescence

Immunocytochemistry analysis of mtTFA/TFAM(green) in HeLa using mtTFA/TFAM antibody, and DAPI(blue)



Immunohistochemical

Immunohistochemistry analysis of paraffin-embedded Human breast cancer using mtTFA antibody. High-pressure and temperature Sodium Citrate pH 6.0 was used for antigen retrieval.



Western blot analysis of mtTFA in K562, HeLa lysates using mtTFA antibody.

Western blot