

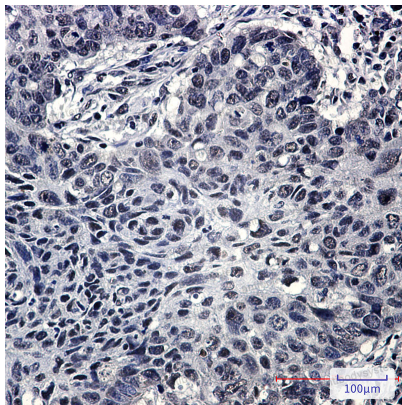
Anti-SRSF3 Antibody (R2B51)

Summary

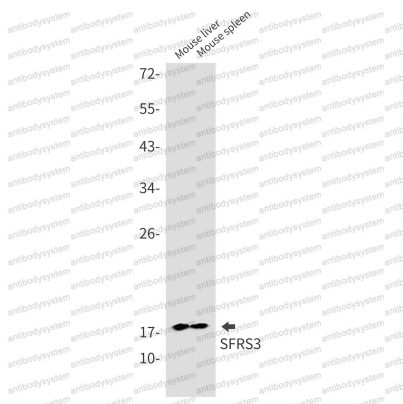
Catalog No.	RHF76301
Clone ID	R2B51
Host species	Rabbit
Tested applications	IHC: 1:50-1:100, WB: 1:500-1:1000
Species reactivity	Human, Mouse, Rat
Form	Liquid
Storage buffer	0.01M PBS, pH 7.4, 0.05% BSA, 50% Glycerol, 0.05% Sodium azide.
Concentration	1 mg/ml
Purity	>95% by SDS-PAGE.
Clonality	Monoclonal
Isotype	IgG
Applications	IHC, WB
Target	Pre-mRNA-splicing factor SRP20, SRSF3, SFRS3, Serine/arginine-rich splicing factor 3, Splicing factor, arginine/serine-rich 3, SRP20
Purification	Protein A/G purified from cell culture supernatant.
Endotoxin level	Please contact with the lab for this information.
Accession	P84103
Stability and Storage	Use a manual defrost freezer and avoid repeated freeze thaw cycles. Store at 4 °C for frequent use. Store at -20 °C for twelve months from the date of receipt.

Note

For research use only.

Data Image**Immunohistochemical**

Immunohistochemistry analysis of paraffin-embedded Human lung cancer using SFRS3 antibody. High-pressure and temperature Sodium Citrate pH 6.0 was used for antigen retrieval.

**Western blot**

Western blot analysis of SFRS3 in mouse liver, mouse spleen lysates using SRSF3 antibody.



Western blot

Western blot analysis of SFRS3 in Jurkat, C6, HeLa lysates using SFRS3 antibody.