

Anti-GTF2I Antibody (R2B26)

Summary

Catalog No.	RHF65101
Clone ID	R2B26
Host species	Rabbit
Tested applications	IF: 1:50-1:200, IHC: 1:50-1:100, WB: 1:500-1:1000
Species reactivity	Human
Form	Liquid
Storage buffer	0.01M PBS, pH 7.4, 0.05% BSA, 50% Glycerol, 0.05% Sodium azide.
Concentration	1 mg/ml
Purity	>95% by SDS-PAGE.
Clonality	Monoclonal
Isotype	IgG
Applications	IF, IHC, WB
Target	SPIN, General transcription factor II-I, BAP135, Bruton tyrosine kinase-associated protein 135, WBSCR6, BAP-135, TFII-I, SRF-Phox1-interacting protein, Williams-Beuren syndrome chromosomal region 6 protein, BTK-associated protein 135, GTF2I, GTFII-I
Purification	Protein A/G purified from cell culture supernatant.
Endotoxin level	Please contact with the lab for this information.
Accession	P78347

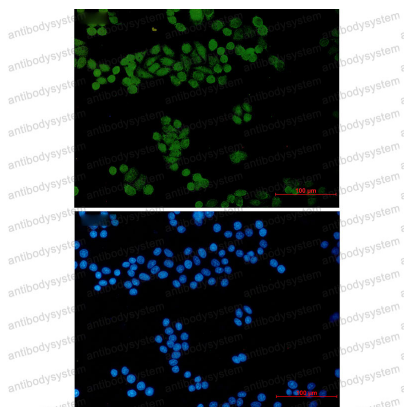
Stability and Storage

Use a manual defrost freezer and avoid repeated freeze thaw cycles. Store at 4 °C for frequent use. Store at -20 °C for twelve months from the date of receipt.

Note

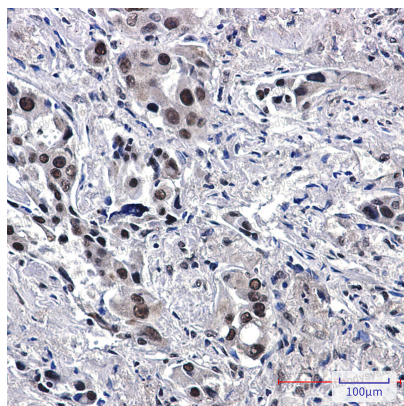
For research use only.

Data Image



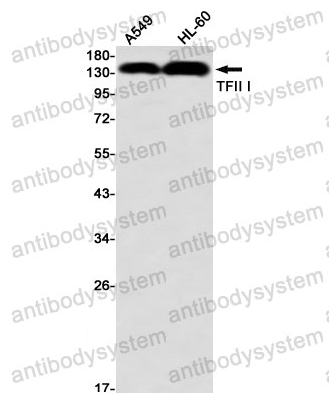
Immunofluorescence

Immunocytochemistry analysis of General Transcription Factor II I (green) in Hela using General Transcription Factor II I antibody, and DAPI (blue).



Immunohistochemical

Immunohistochemistry analysis of paraffin-embedded Human lung cancer tissue using TFII I antibody. High-pressure and temperature Sodium Citrate pH 6.0 was used for antigen retrieval.



Western blot

Western blot analysis of TFII I in A549, HL-60 lysates using TFII I antibody.