

Anti-Phospho-Histone H3 (Ser10/Thr11) Antibody (R2B17)

Summary

Catalog No.	RHF62743
Clone ID	R2B17
Host species	Rabbit
Tested applications	IF: 1:50-1:200, IHC: 1:50-1:100, IP: 1:20, WB: 1:500-1:1000
Species reactivity	Human, Mouse, Rat
Form	Liquid
Storage buffer	0.01M PBS, pH 7.4, 0.05% BSA, 50% Glycerol, 0.05% Sodium azide.
Concentration	1 mg/ml
Purity	>95% by SDS-PAGE.
Clonality	Monoclonal
Isotype	IgG
Applications	IF, IHC, IP, WB
Target	Histone H3/j, Histone H3/b, Histone H3/d, Histone H3/c, HIST1H3B, H3FH, Histone H3/f, H3FF, H3FK, HIST1H3G, H3FL, H3FB, HIST1H3D, Histone H3/a, H3FI, Histone H3/i, H3FD, HIST1H3A, Histone H3/h, HIST1H3I, HIST1H3E, HIST1H3H, HIST1H3J, H3C1, H3FC HIST1H3C, H3FA, Histone H3.1, H3FJ, Histone H3/l, Histone H3/k, HIST1H3F
Purification	Protein A/G purified from cell culture supernatant.
Endotoxin level	Please contact with the lab for this information.

Accession P68431

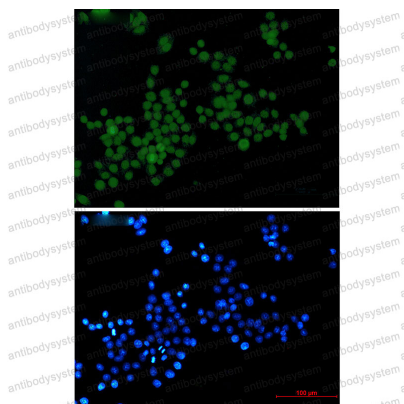
Stability and Storage

Use a manual defrost freezer and avoid repeated freeze thaw cycles. Store at 4 °C for frequent use. Store at -20 °C for twelve months from the date of receipt.

Note

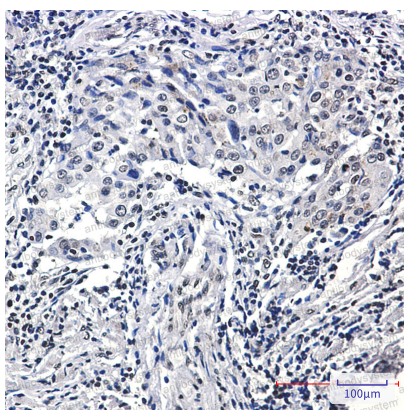
For research use only.

Data Image



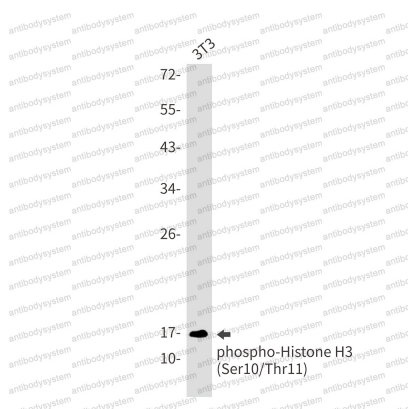
Immunofluorescence

Immunocytochemistry analysis of Phospho-Histone H3 (Ser10/Thr11) (green) in Hela using Phospho-Histone H3 (Ser10/Thr11) antibody, and DAPI (blue).



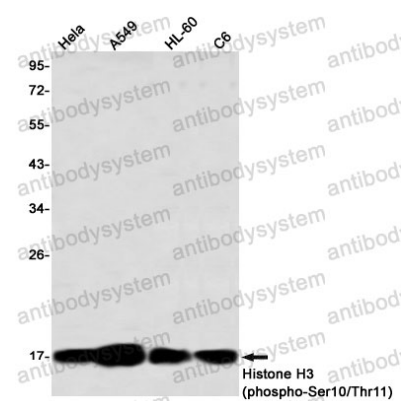
Immunohistochemical

Immunohistochemistry analysis of paraffin-embedded Human lung cancer using Histone H3 (Phospho-Ser10/Thr11) antibody. High-pressure and temperature Sodium Citrate pH 6.0 was used for antigen retrieval.



Western blot

Western blot analysis of Phospho-Histone H3 (Ser10/Thr11) in 3T3 lysates using Phospho-Histone H3 (Ser10/Thr11)antibody.



Western blot

Western blot analysis of Histone H3 (Phospho-Ser10/Thr11) in HeLa, A549, HL-60, C6 lysates using Histone H3 (Phospho-Ser10/Thr11) antibody