

# Anti-Histone H3 (symmetric dimethyl R17) Antibody (R2A95)

## Summary

---

<b>Catalog No.</b>	RHF62722
<b>Clone ID</b>	R2A95
<b>Host species</b>	Rabbit
<b>Tested applications</b>	IF: 1:50-1:200, WB: 1:1000-1:2000
<b>Species reactivity</b>	Human, Mouse
<b>Form</b>	Liquid
<b>Storage buffer</b>	0.01M PBS, pH 7.4, 0.05% BSA, 50% Glycerol, 0.05% Sodium azide.
<b>Concentration</b>	1 mg/ml
<b>Purity</b>	>95% by SDS-PAGE.
<b>Clonality</b>	Monoclonal
<b>Isotype</b>	IgG
<b>Applications</b>	IF, WB
<b>Target</b>	Histone H3/j, Histone H3/b, Histone H3/d, Histone H3/c, HIST1H3B, H3FH, Histone H3/f, H3FF, H3FK, HIST1H3G, H3FL, H3FB, HIST1H3D, Histone H3/a, H3FI, Histone H3/i, H3FD, HIST1H3A, Histone H3/h, HIST1H3I, HIST1H3E, HIST1H3H, HIST1H3J, H3C1, H3FC HIST1H3C, H3FA, Histone H3.1, H3FJ, Histone H3/l, Histone H3/k, HIST1H3F
<b>Purification</b>	Protein A/G purified from cell culture supernatant.
<b>Endotoxin level</b>	Please contact with the lab for this information.

## Recombinant Proteins &amp; Antibodies

**Accession**

P68431

**Stability and Storage**

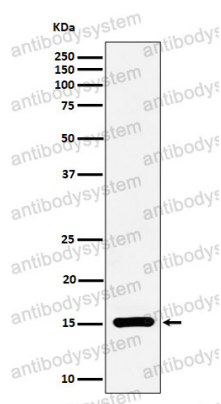
Use a manual defrost freezer and avoid repeated freeze thaw cycles. Store at 4 °C for frequent use. Store at -20 °C for twelve months from the date of receipt.

**Note**

For research use only.

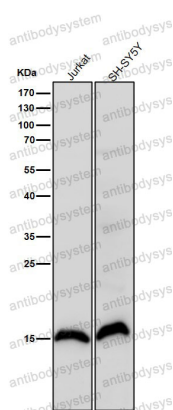
## Data Image

---



Western blot

Western blot analysis of Histone H3 (symmetric di methyl R17) expression in HeLa cell lysate.



Western blot

All lanes use the Antibody at 1:1K dilution for 1 hour at room temperature.