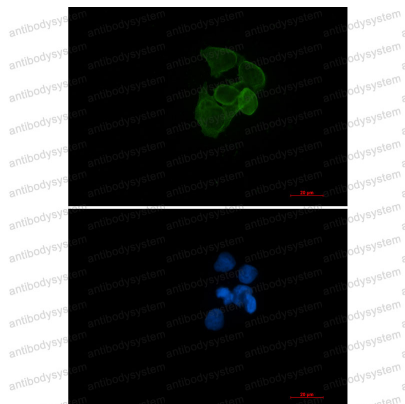


Anti-ACTA1 Antibody (R2A88)

Summary

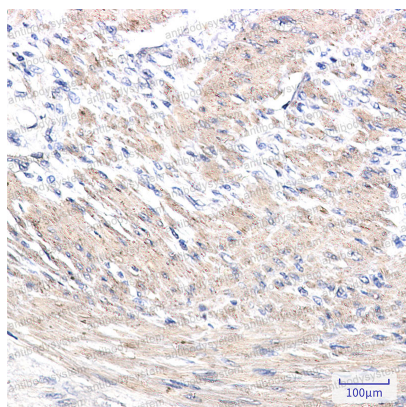
| | |
|------------------------------|---|
| Catalog No. | RHF62107 |
| Clone ID | R2A88 |
| Host species | Rabbit |
| Tested applications | IF: 1:50-1:200, IHC: 1:50-1:100, IP: 1:20, WB: 1:500-1:1000 |
| Species reactivity | Human, Rat, Hamster |
| Form | Liquid |
| Storage buffer | 0.01M PBS, pH 7.4, 0.05% BSA, 50% Glycerol, 0.05% Sodium azide. |
| Concentration | 1 mg/ml |
| Purity | >95% by SDS-PAGE. |
| Clonality | Monoclonal |
| Isotype | IgG |
| Applications | IF, IHC, IP, WB |
| Target | ACTA1, Alpha-actin-1, ACTA, Actin, alpha skeletal muscle |
| Purification | Protein A/G purified from cell culture supernatant. |
| Endotoxin level | Please contact with the lab for this information. |
| Accession | P68133 |
| Stability and Storage | Use a manual defrost freezer and avoid repeated freeze thaw cycles. Store at 4 °C for frequent use. Store at -20 °C for twelve months from the date of receipt. |
| Note | For research use only. |

Data Image



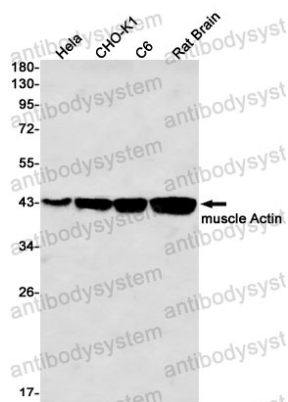
Immunofluorescence

Immunocytochemistry analysis of alpha Skeletal Muscle Actin (green) in Hela using alpha Skeletal Muscle Actin antibody, and DAPI (blue).



Immunohistochemical

Immunohistochemistry analysis of paraffin-embedded Human colon cancer tissue using muscle Actin antibody. High-pressure and temperature Sodium Citrate pH 6.0 was used for antigen retrieval.



Western blot

Western blot analysis of muscle Actin in Hela, CHO-K1, C6, rat Brain lysates using muscle Actin antibody.