

Anti-EEF1A1 Antibody (R2A82)

Summary

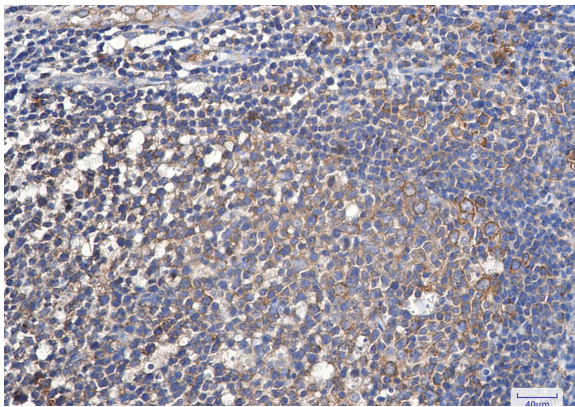
Catalog No.	RHF61903
Clone ID	R2A82
Host species	Rabbit
Tested applications	IHC: 1:50-1:100, IP: 1:20, WB: 1:500-1:1000
Species reactivity	Human, Mouse, Rat
Form	Liquid
Storage buffer	0.01M PBS, pH 7.4, 0.05% BSA, 50% Glycerol, 0.05% Sodium azide.
Concentration	1 mg/ml
Purity	>95% by SDS-PAGE.
Clonality	Monoclonal
Isotype	IgG
Applications	IHC, IP, WB
Target	EEF1A, Elongation factor Tu, Leukocyte receptor cluster member 7, Elongation factor 1-alpha 1, EF-1-alpha-1, Eukaryotic elongation factor 1 A-1, EF-Tu, EF1A, eEF1A-1, LENG7, EEF1A1
Purification	Protein A/G purified from cell culture supernatant.
Endotoxin level	Please contact with the lab for this information.
Accession	P68104

Stability and Storage

Use a manual defrost freezer and avoid repeated freeze thaw cycles. Store at 4 °C for frequent use. Store at -20 °C for twelve months from the date of receipt.

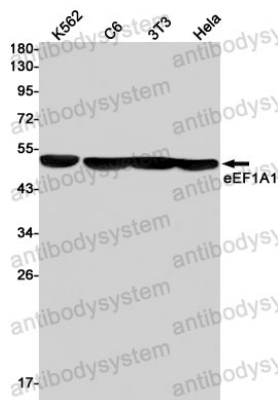
Note

For research use only.

Data Image

Immunohistochemical

Immunohistochemistry analysis of paraffin-embedded Human tonsil using eEF1A1 antibody. High-pressure and temperature Sodium Citrate pH 6.0 was used for antigen retrieval.



Western blot

Western blot analysis of eEF1A1 in K562, C6, 3T3, HeLa lysates using Elongation Factor 1A1 antibody.