

Anti-UBE2L3 Antibody (R2A80)

Summary

Catalog No.	RHF61801
Clone ID	R2A80
Host species	Rabbit
Tested applications	IF: 1:50-1:200, IP: 1:20, WB: 1:500-1:1000
Species reactivity	Human, Mouse, Rat
Form	Liquid
Storage buffer	0.01M PBS, pH 7.4, 0.05% BSA, 50% Glycerol, 0.05% Sodium azide.
Concentration	1 mg/ml
Purity	>95% by SDS-PAGE.
Clonality	Monoclonal
Isotype	IgG
Applications	IF, IP, WB
Target	UBE2L3, Ubiquitin-conjugating enzyme E2-F1, UBC7, Ubiquitin-conjugating enzyme E2 L3, UBCE7, L-UBC, E2 ubiquitin-conjugating enzyme L3, UbCH7, Ubiquitin-protein ligase L3, Ubiquitin carrier protein L3
Purification	Protein A/G purified from cell culture supernatant.
Endotoxin level	Please contact with the lab for this information.
Accession	P68036

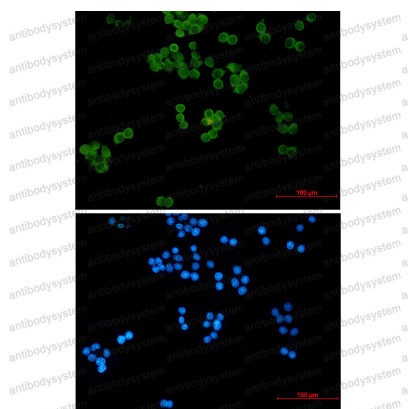
Recombinant Proteins & Antibodies

Stability and Storage

Use a manual defrost freezer and avoid repeated freeze thaw cycles. Store at 4 °C for frequent use. Store at -20 °C for twelve months from the date of receipt.

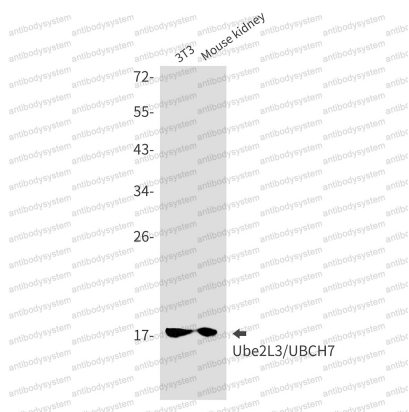
Note

For research use only.

Data Image

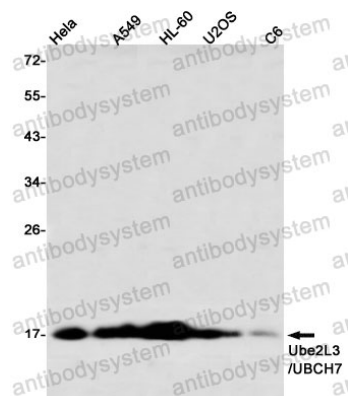
Immunofluorescence

Immunocytochemistry analysis of Ubiquitin Conjugating Enzyme E2 L3 (green) in HeLa using Ubiquitin Conjugating Enzyme E2 L3 antibody, and DAPI (blue).



Western blot

Western blot analysis of Ube2L3/UBCH7 in 3T3, mouse kidney lysates using Ube2L3/UBCH7 antibody.



Western blot

Western blot analysis of Ube2L3/UBCH7 in HeLa, A549, HL-60, U2OS, C6 lysates using Ube2L3/UBCH7 antibody